

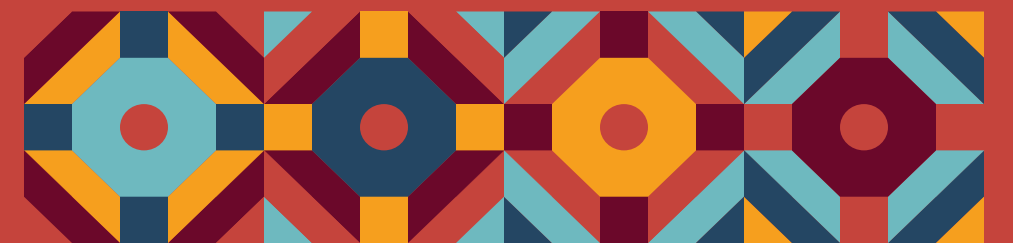


November 17, 2022

MARBLE MANOR EMERGING PHYSICAL PLAN

MARBLE MANOR CHOICE NEIGHBORHOODS PLANNING

Las Vegas, Nevada



AGENDA

- The Planning Process
- The Future of the Marble Manor Site
- Early Action Activities
- People
- What's Next?
- Join the Conversation!

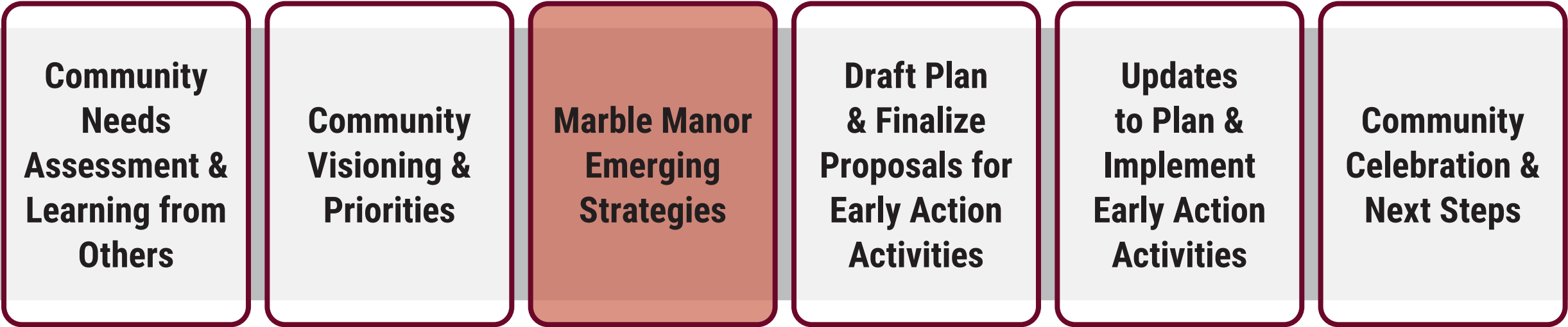


PLANNING PROCESS



PLANNING TIMELINE

2021	2022				2023			
Winter	Spring	Summer	Fall	Winter	Spring	Summer	Fall	Winter



We are Here

AUGUST ENGAGEMENT SUMMARY

40
neighborhood
meeting
attendees

25
resident meeting
attendees

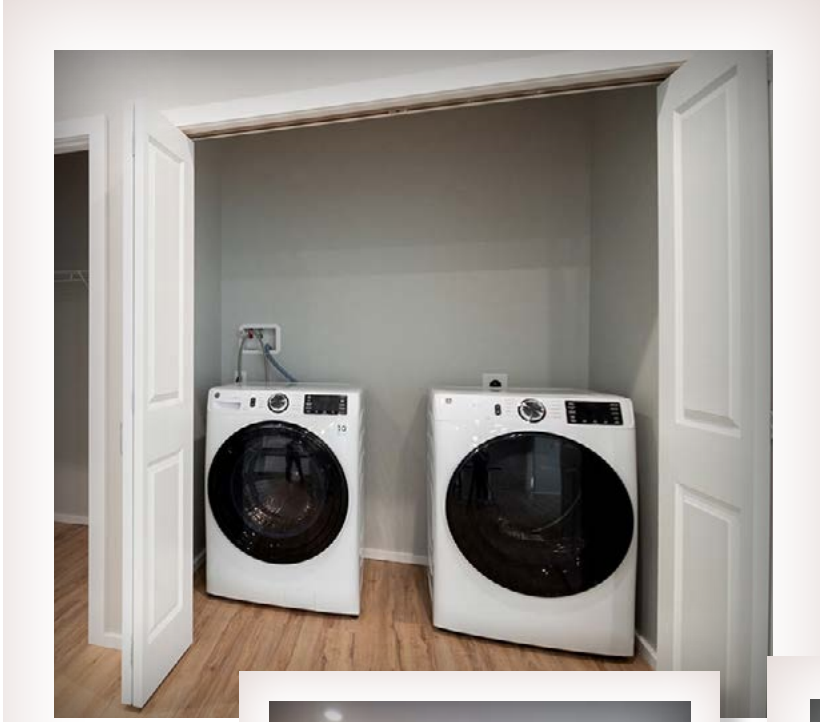
8
kids at youth
engagement

1,055
dots, ideas, &
comments received

VISION FOR HOUSING

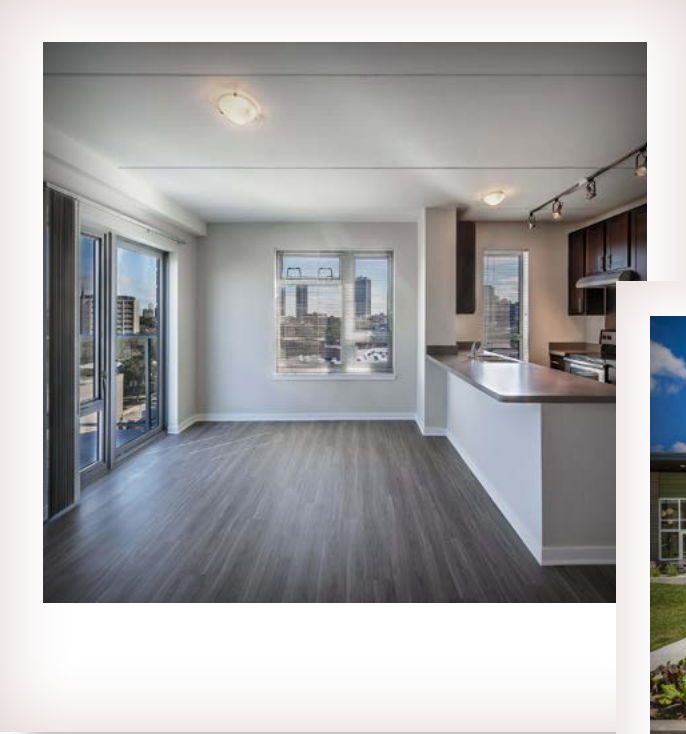
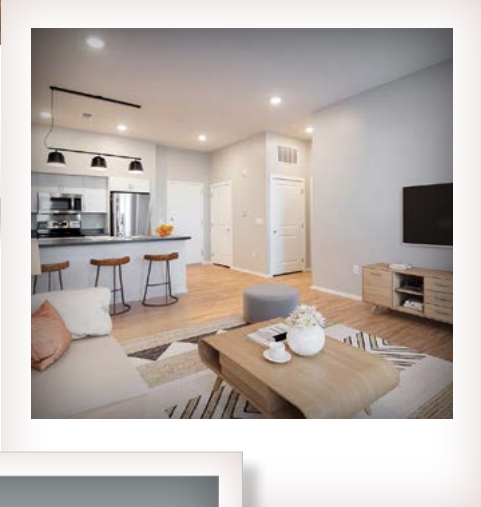
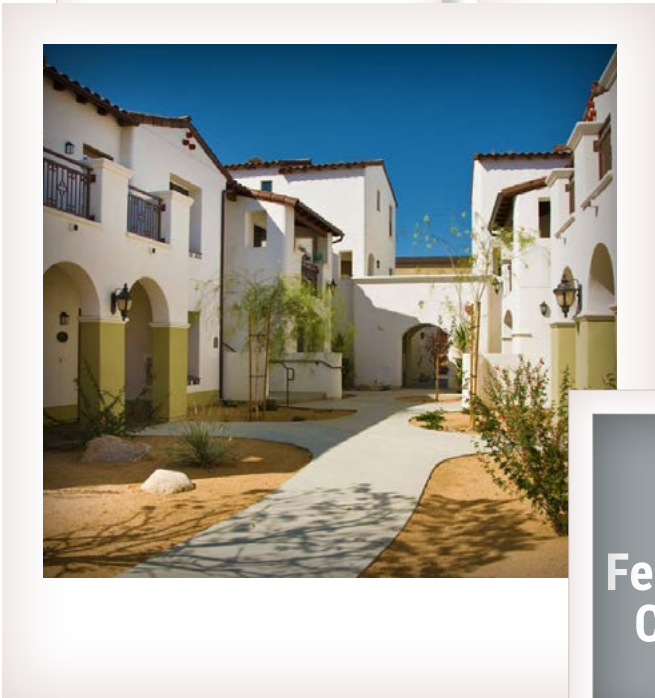
**Housing for the
Historic Westside
Community**

**Green Energy
and
Solar Panels**

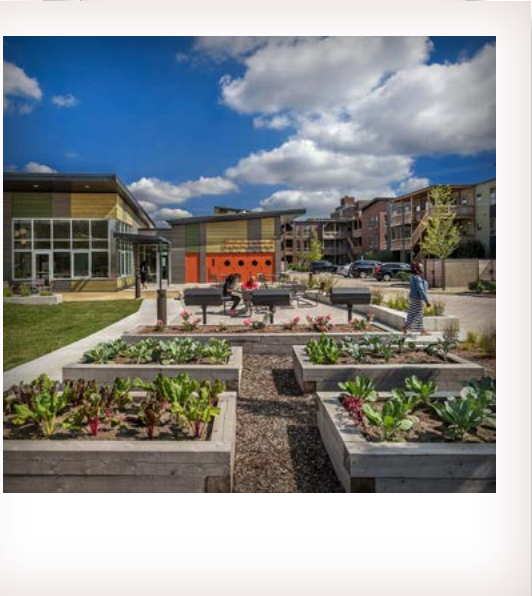


**Want something that
feels like home!**

**Gas Stoves and
Fire Places**



**Backyard
Fences with No
Clotheslines**



Modern look is good!

TOWNHOUSES



7

Looks like a house, has some independence, with its own front door



5



3



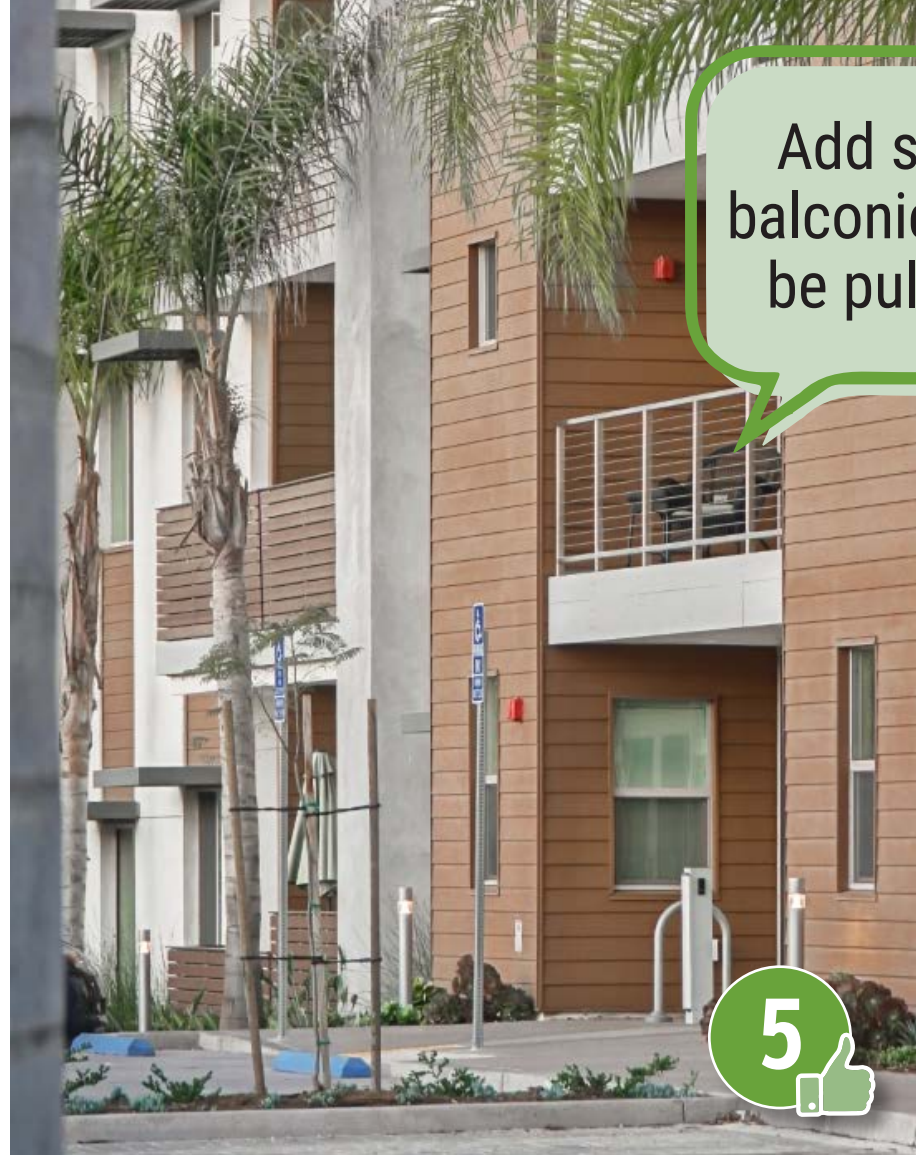
7

Love the bright colors and the green spaces out front!

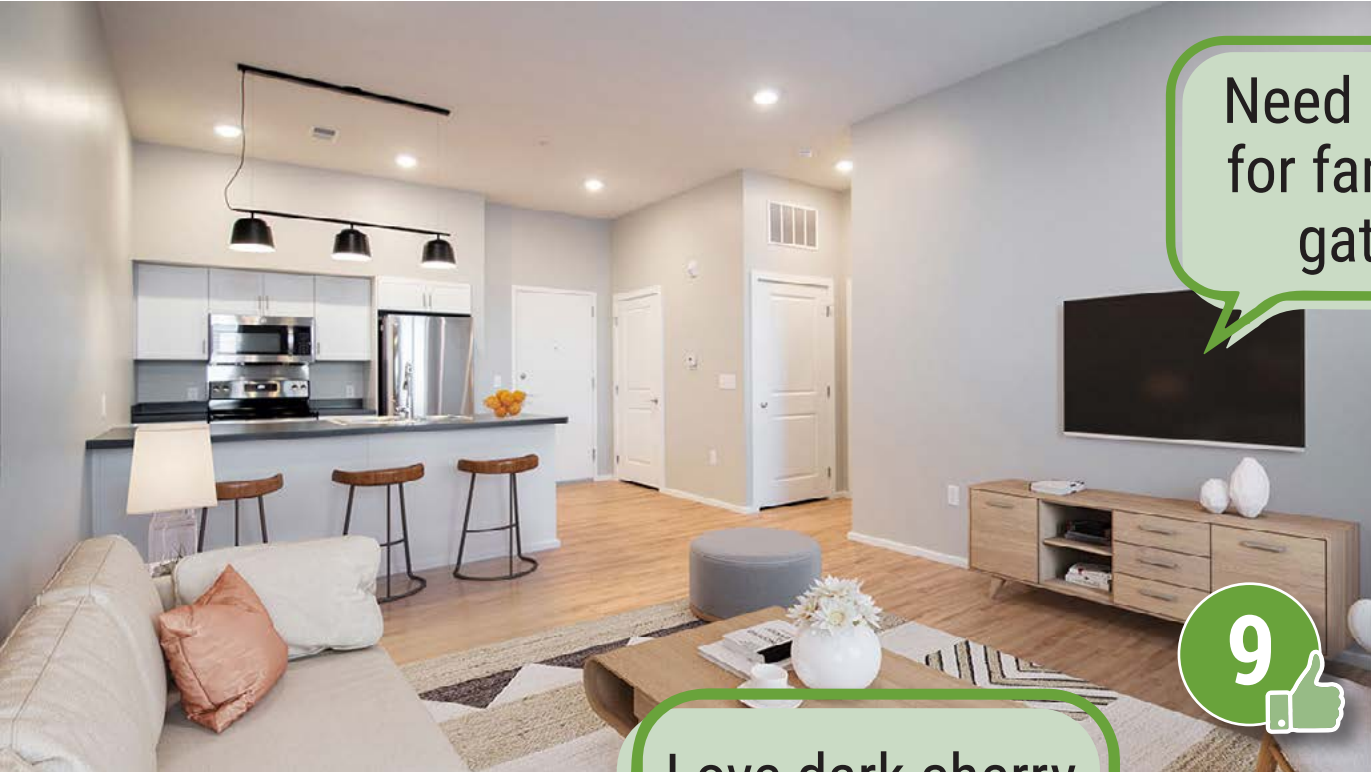


9

MULTI-FAMILY

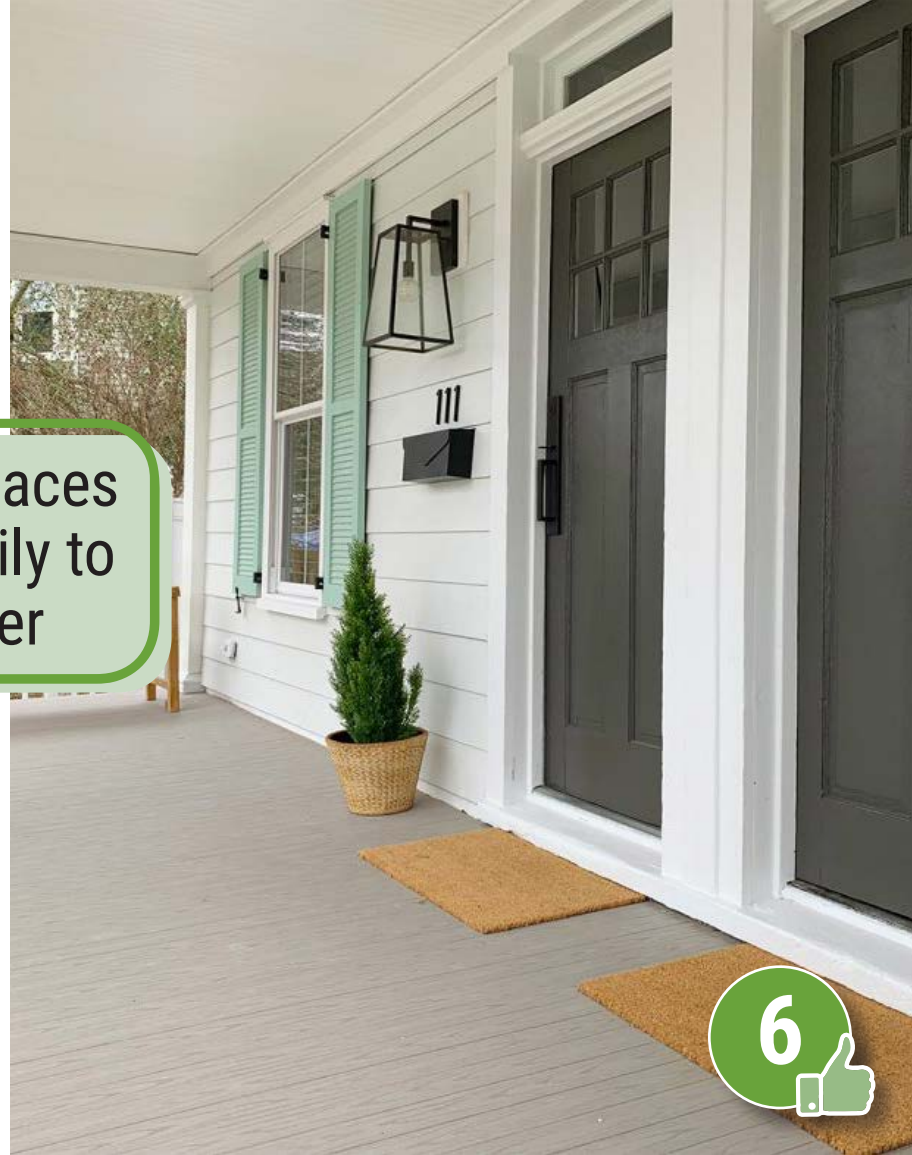


UNIT AMENITIES



Need places for family to gather

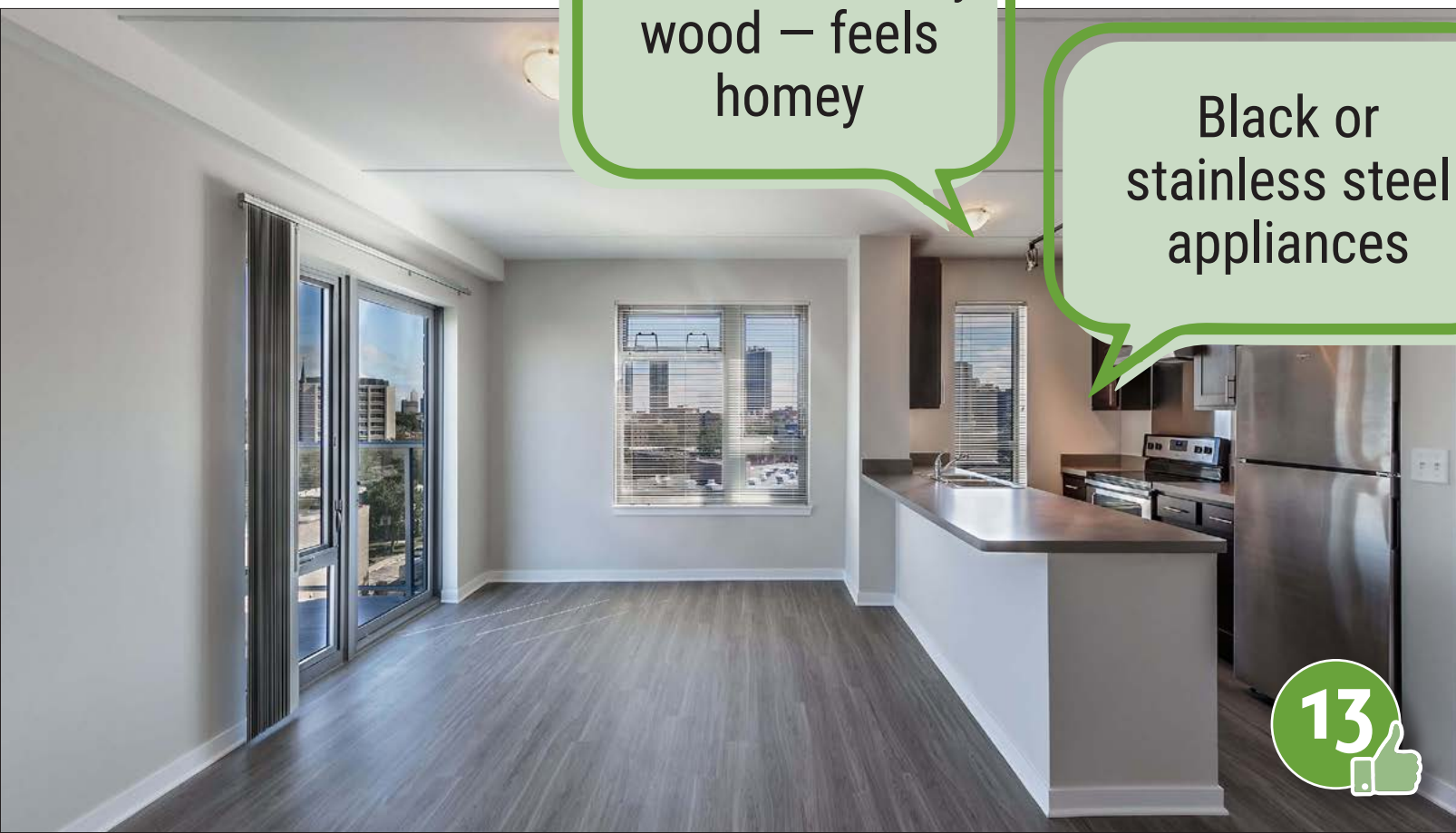
9



6



22



Love dark cherry wood – feels homey

Black or stainless steel appliances

13



11

SHARED AMENITIES

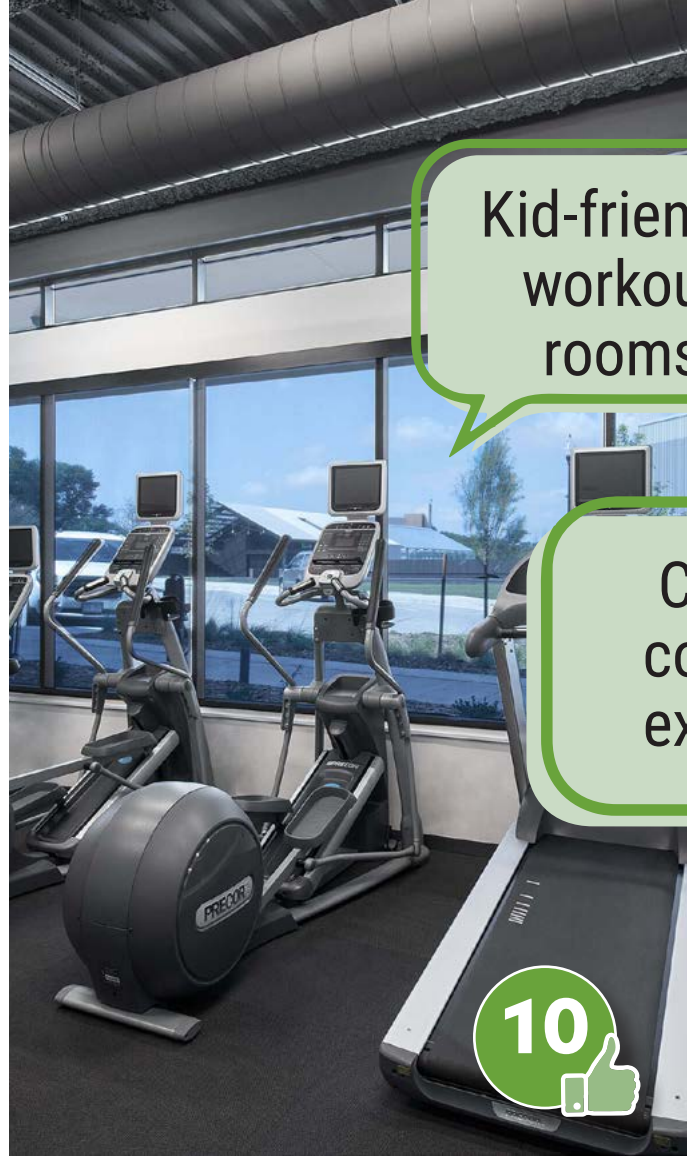


17

Encourage and support sustainability through community gardening



17



Kid-friendly workout rooms

Creativity, colors, and excitement

10



12

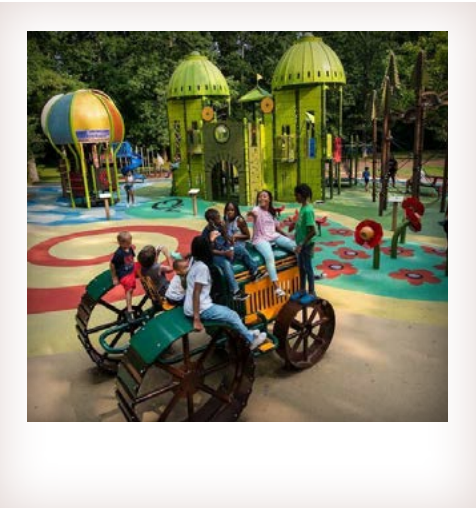
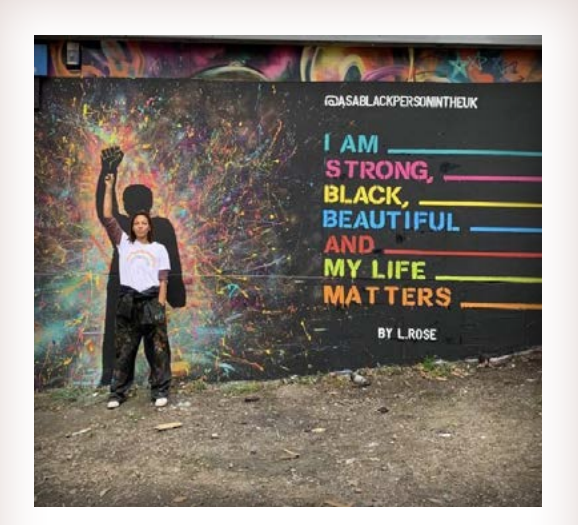
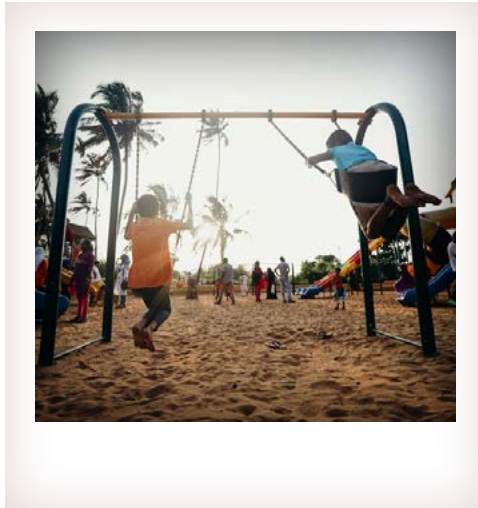


10

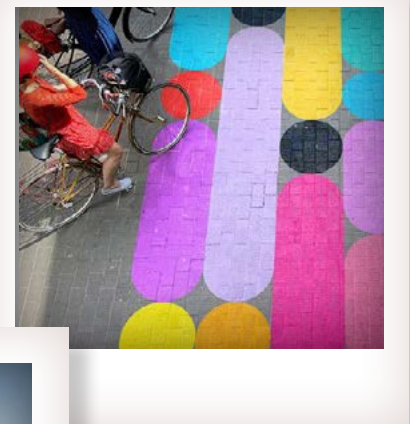


9

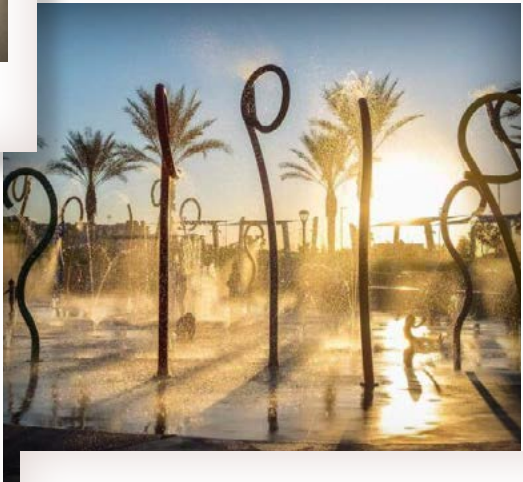
VISION FOR NEIGHBORHOOD



Safe and fun things for kids to do inside and outside

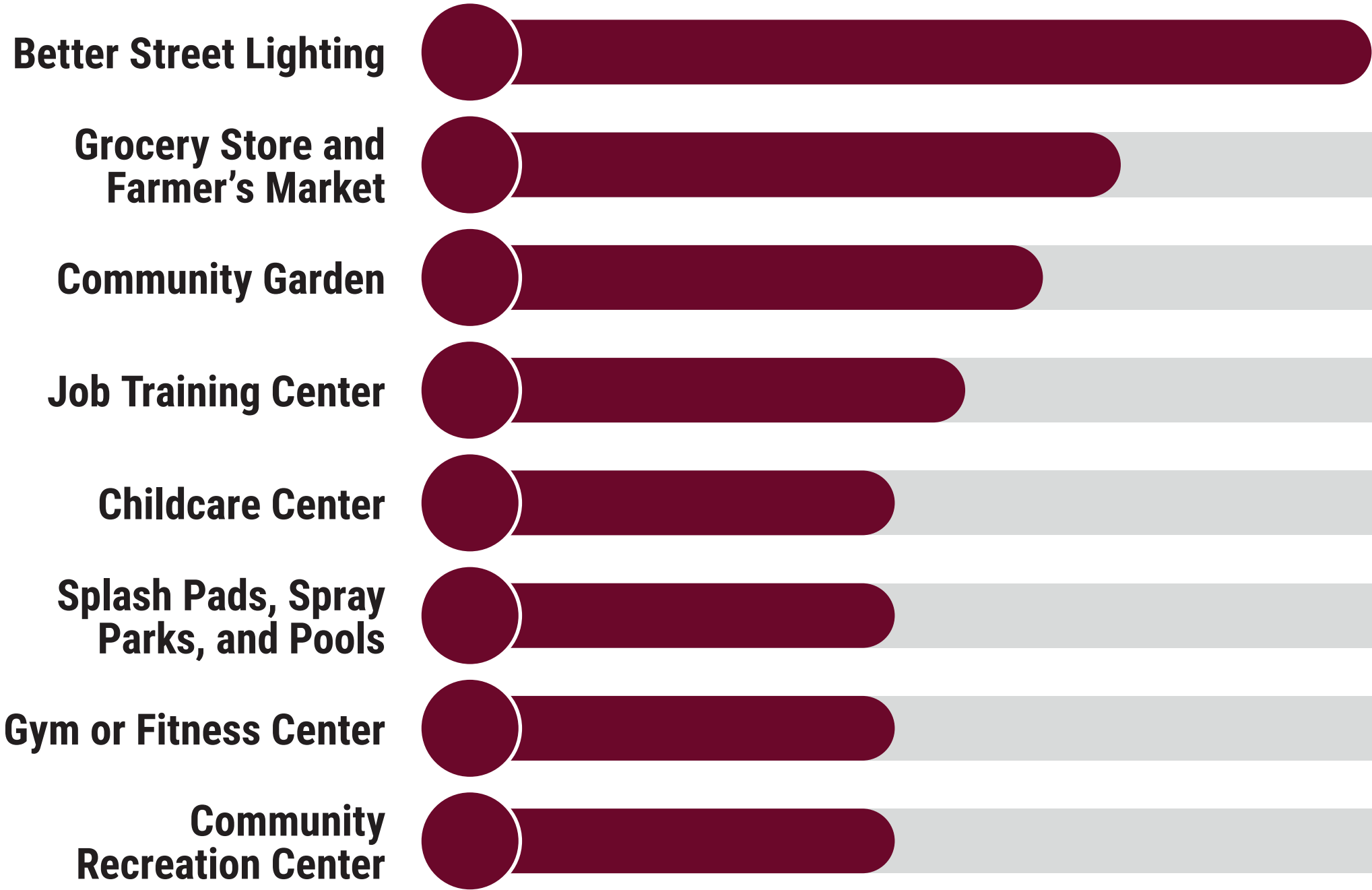


Teach Black history with dignity and truth!



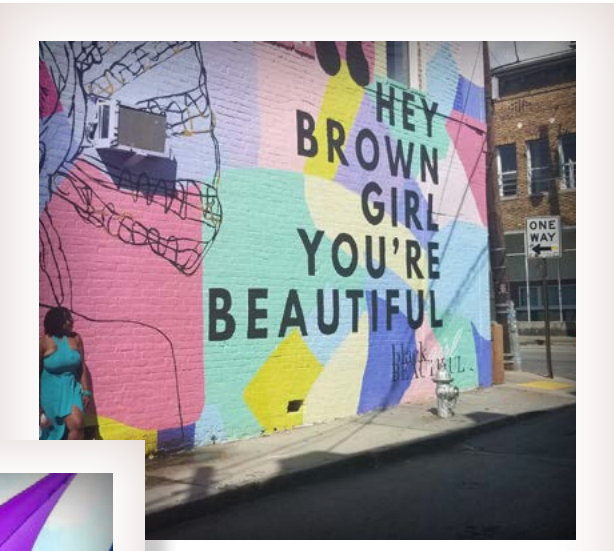
Repurpose vacant lots for neighborhood uses

NEIGHBORHOOD AMENITIES

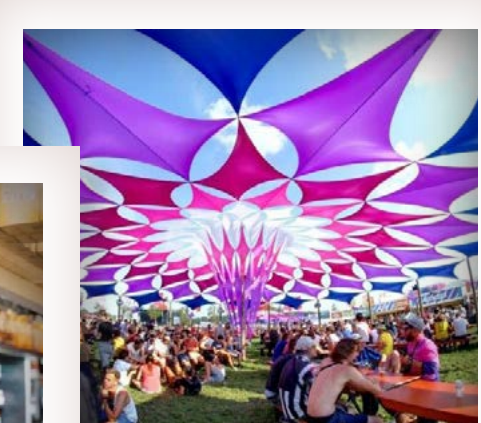
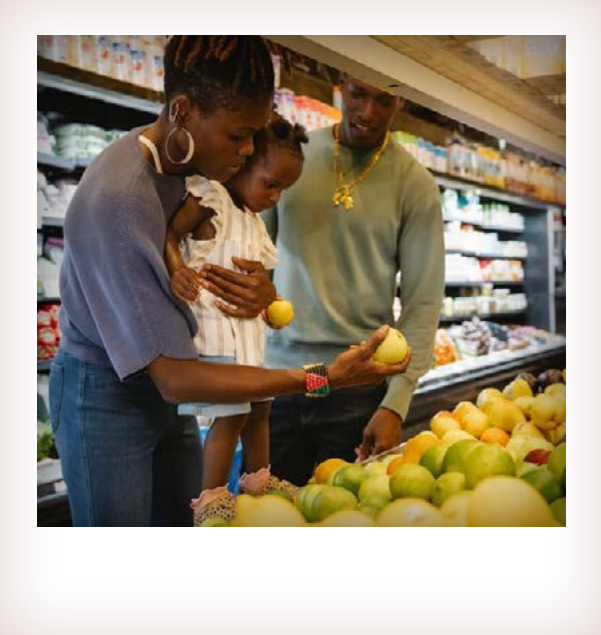
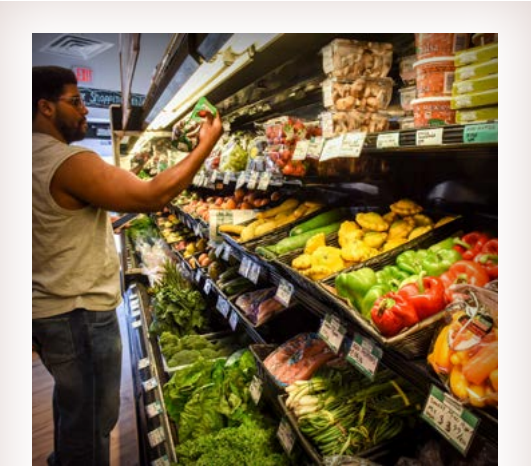


VISION FOR PEOPLE

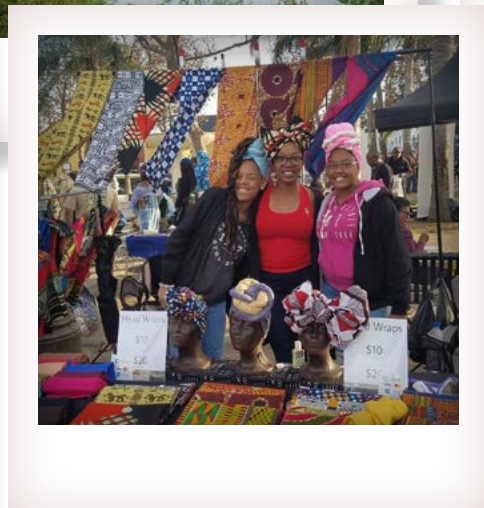
Happy and supportive families



Place of peace



Bring the businesses back to the Jackson Street area



Job training and development

PEOPLE AMENITIES

Income and Employment

- **Workforce and Job Skills Training**
- **Computer Basics**
- **Certification Programs for Technology Careers**
- **Apprenticeship Programs**
- **Financial Literacy and Budgeting**
- **Job Search Assistance**
- **Career Exploration**
- **Small and Micro Business Development Assistance**

Health and Wellness

- **Mental Health Supports**
- **Activities for Active Adults 55+**
- **Community Garden Club**
- **Medical Services and Primary Care**
- **Affordable Fresh Produce**
- **Fitness Program and Classes**
- **Nutrition & Healthy Cooking Classes**
- **Cultural and Historic Celebrations and Events**

Education and Youth

- **Job Training or Employment**
- **Technology and Robotics Programs**
- **Early Intervention Services for Special Needs**
- **Homework Support and Tutoring**
- **Performing Arts & Drama Programs**
- **Teen Drop-In Center**
- **Visual Arts/Crafts Programs**
- **Sports and Recreation**

NOVEMBER STUDIO SESSIONS



Monday, Nov. 14th
Ambassador Studio Session

Tuesday, Nov. 15th
Resident Studio Session
Neighborhood Studio Session

Wednesday, Nov. 16th
Youth Studio Session

Thursday, Nov. 17th
Community Studio Session

THE FUTURE OF THE MARBLE MANOR SITE



FROM PUBLIC HOUSING TO MIXED-INCOME

Mixed-Income means:

Families earning a range of incomes live together in the same community and housing.

The future housing will:

1. **Replace every existing unit at for public housing families**
2. **Add new affordable housing**
3. **Add unrestricted housing**

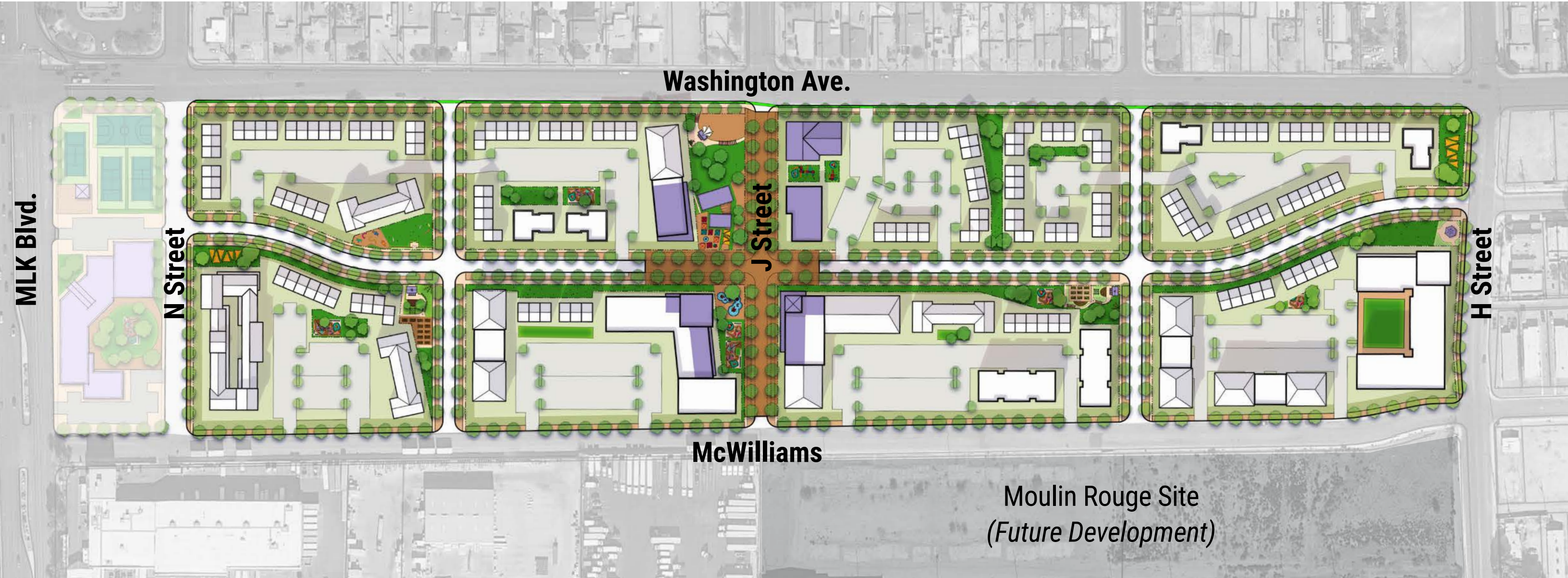


RIGHT-TO-RETURN

Residents living at Marble Manor at the time HUD approves the plan will have a right to return.



THE COMMUNITY VISION



- COMMUNITY AMENITY SPACES
- COMMUNITY OPEN SPACE
- PLAZA GATHERING SPACE

Moulin Rouge Site
(Future Development)

5 BIG IDEAS



1. HONORING HISTORY

- Create a place where all residents (*especially current residents*) feel they belong
- Use placemaking, public art, & branding to make this a special place
- Documenting the oral and personal histories of the Marble Manor residents
- Connect to HUNDRED Plan projects that honor the history of the greater Historic Westside



2. INCREASING CHOICES FOR HOUSING

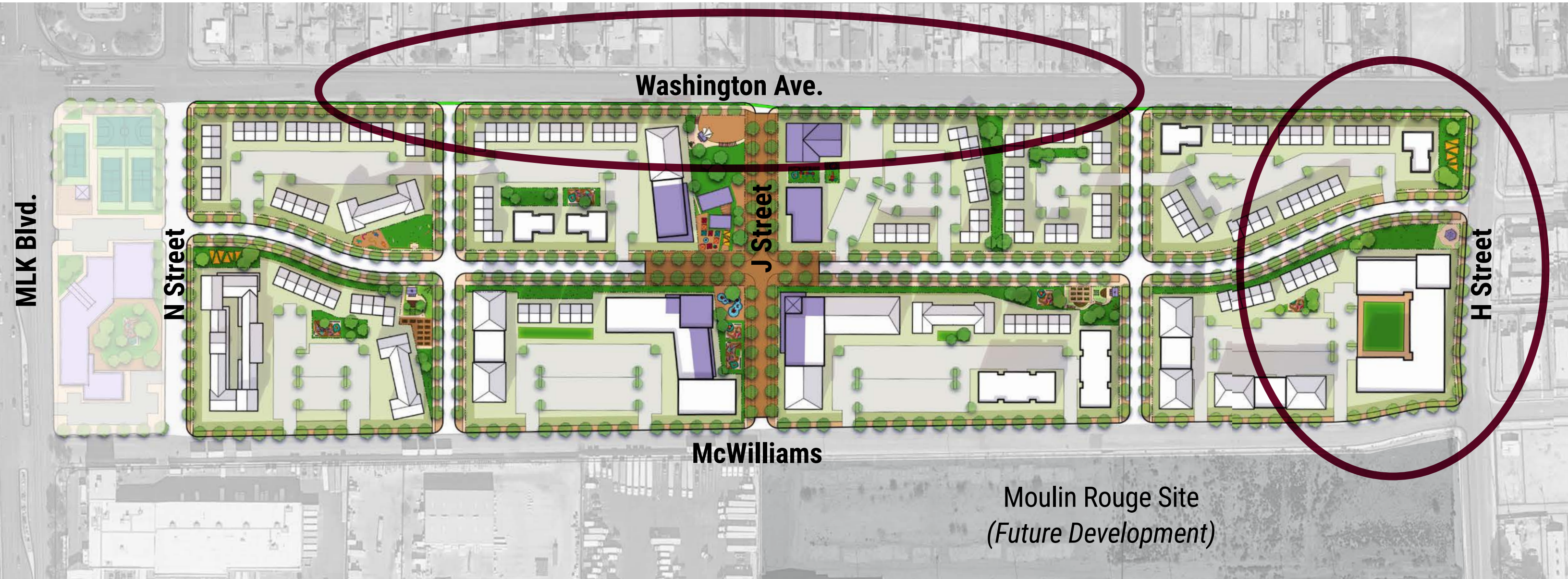
- Range of housing types including:
 - Townhouses
 - Apartments in small buildings
 - Apartments in larger buildings with elevators
- Housing that serves all people:
 - Families with children
 - Adults
 - Seniors
 - People with disabilities & special needs



IN-UNIT AMENITIES FOR NEW HOUSING



3. NEW GATEWAYS INTO THE COMMUNITY



- COMMUNITY AMENITY SPACES
- COMMUNITY OPEN SPACE
- PLAZA GATHERING SPACE

PLANS TO IMPROVE WASHINGTON AVE.

- The City is planning for improvements to Washington Ave that include:
 - Bike lanes
 - Wider sidewalks with trees
 - Narrowing lanes to slow down traffic



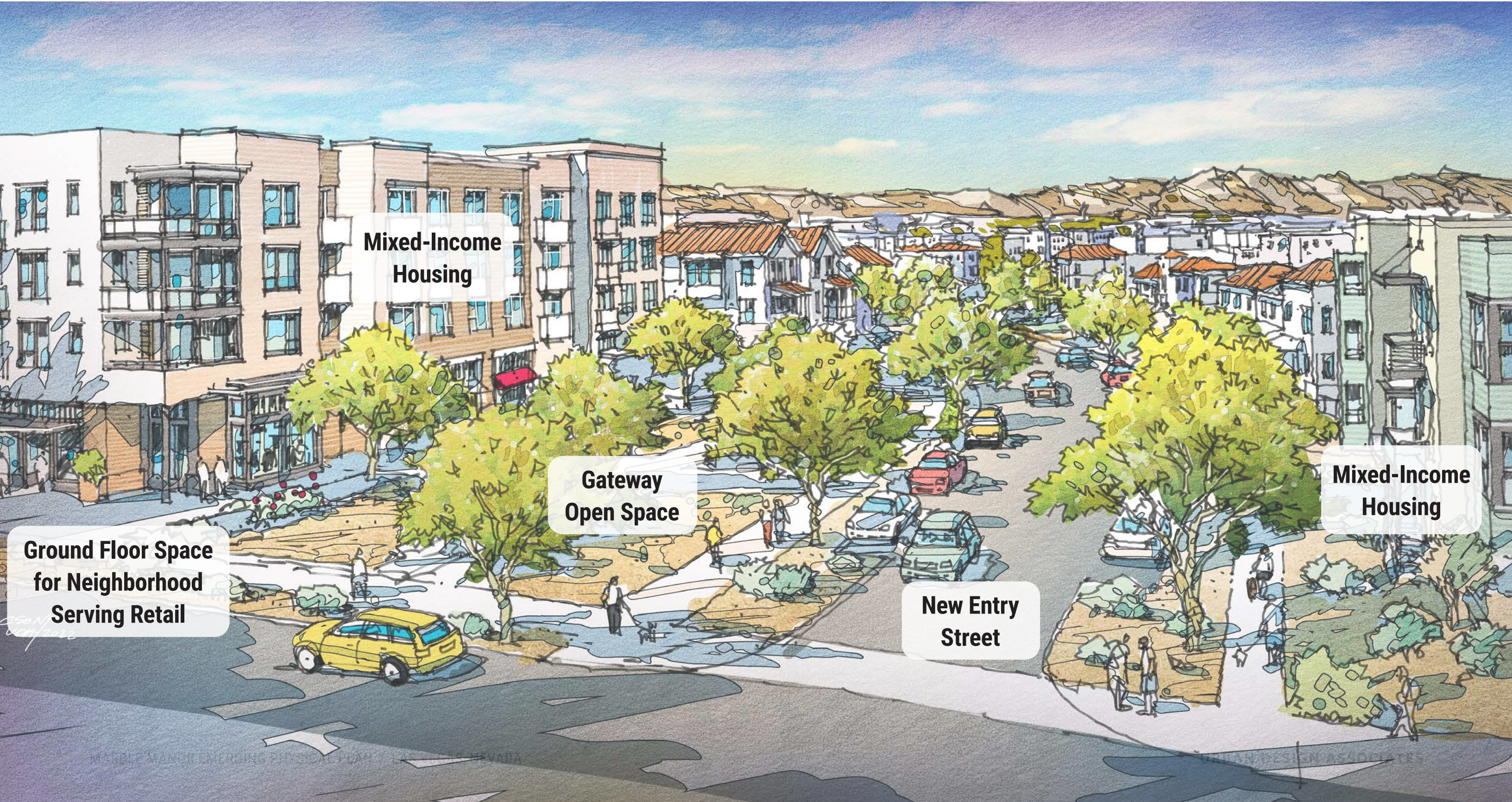
H STREET TODAY



NEW GATEWAY AT H STREET



NEW GATEWAY AT H STREET



Mixed-Income Housing

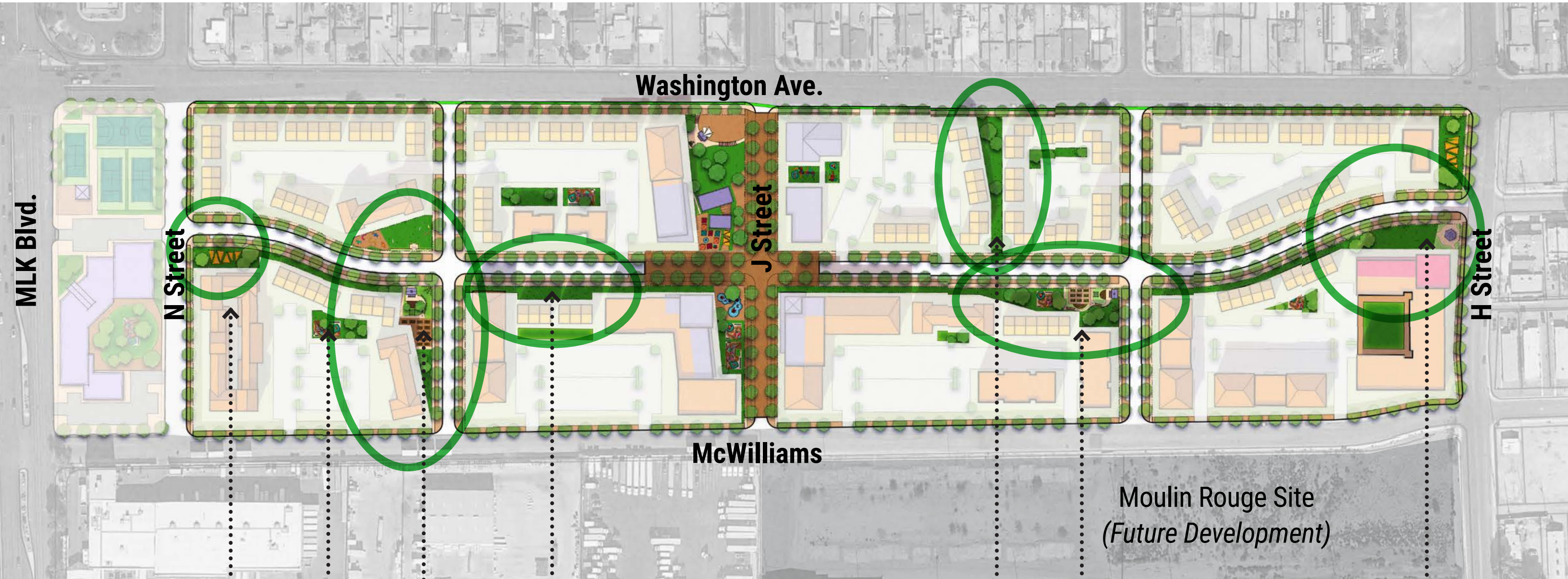
Mixed-Income Housing

Gateway Open Space

Ground Floor Space for Neighborhood Serving Retail

New Entry Street

4. AMENITIES ALONG A GREEN SPINE



MLK Blvd.

N Street

Washington Ave.

J Street

H Street

McWilliams

Moulin Rouge Site
(Future Development)

- COMMUNITY AMENITY SPACES
- COMMUNITY OPEN SPACE
- PLAZA GATHERING SPACE

Shaded Gathering Area

Tot Lot/
Play Area

Dog Park,
Community Garden

Fitness Equipment

Fitness Equipment

Community Garden
Tot Lot

Plaza & Shaded
Gathering Area

EXAMPLE OF AN AMENITY OPEN SPACE



Dog Park



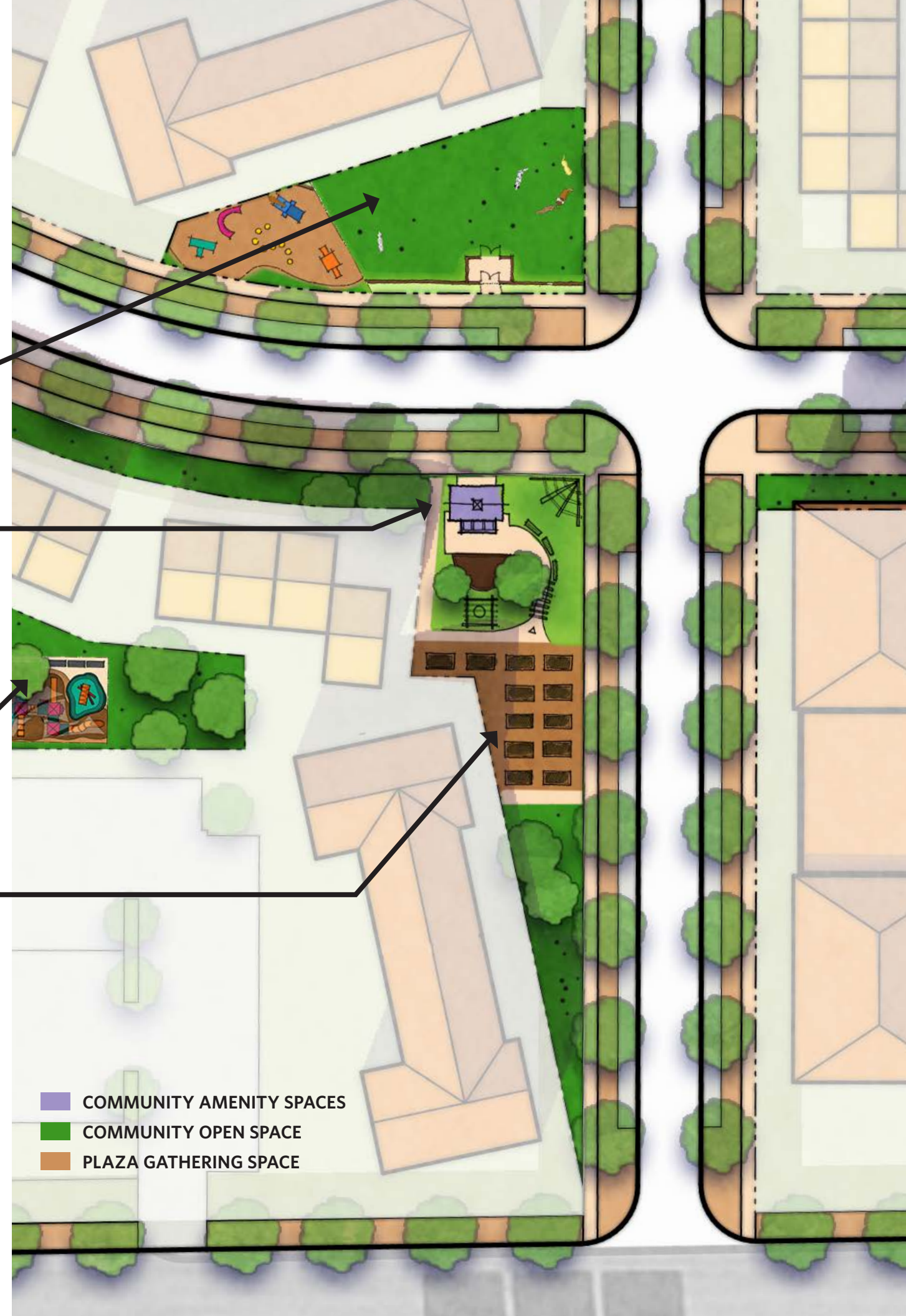
Picnic Shelter



Tot Lots/Play Areas



Community Gardens



November 17, 2022

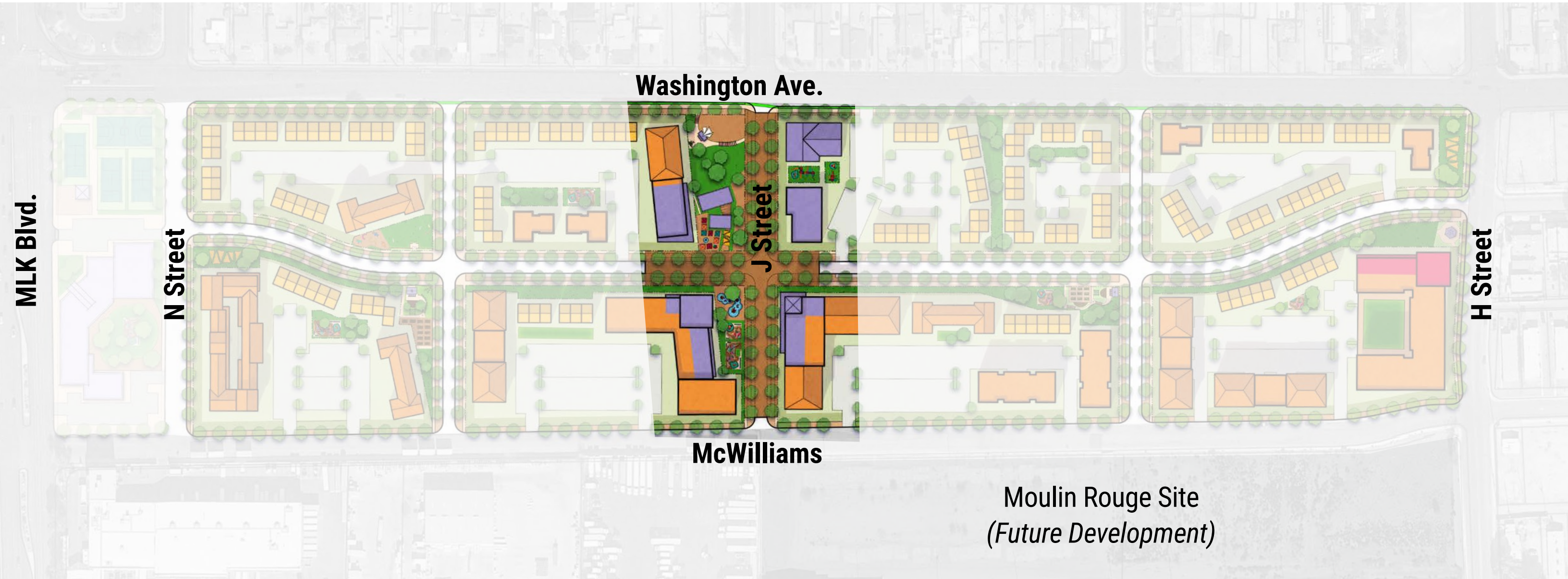
TYPICAL MARBLE MANOR STREET TODAY



**FUTURE
RESIDENTIAL
STREET**



5. THE HEART AT J STREET

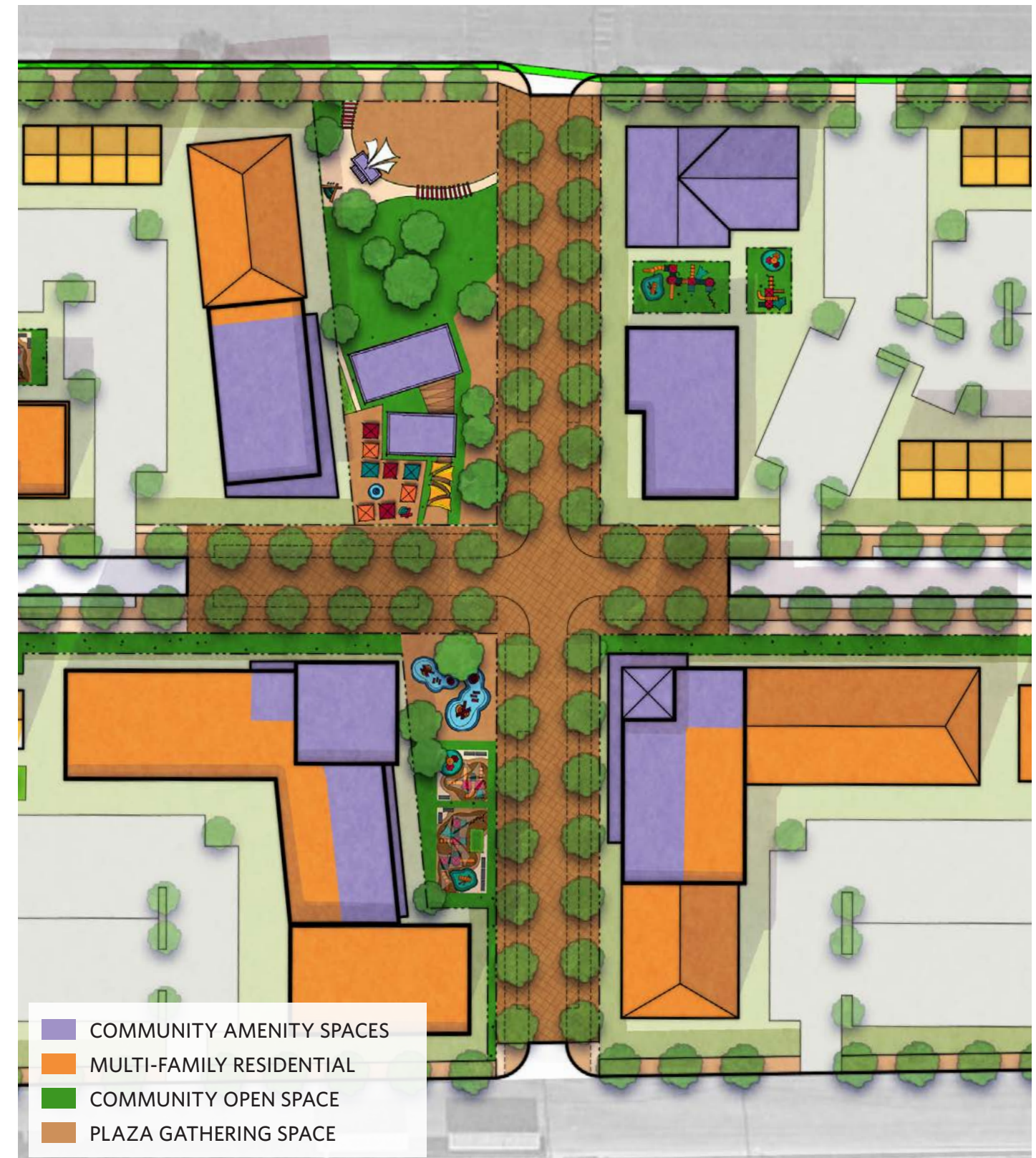


- COMMUNITY AMENITY SPACES
- MULTI-FAMILY RESIDENTIAL
- COMMUNITY OPEN SPACE
- PLAZA GATHERING SPACE

5. THE HEART AT J STREET

Indoor Community Spaces

- Resident Community Center
- Management & leasing office
- Resident family support/case management offices
- Resident amenities (fitness center, computer room, etc.)
- Flexible space for partner programming
- Early childhood education center (for ~80 children)
- A.D. Guy Knowledge Center (relocated)
- Space for neighborhood-serving businesses
- Security office/police sub-station

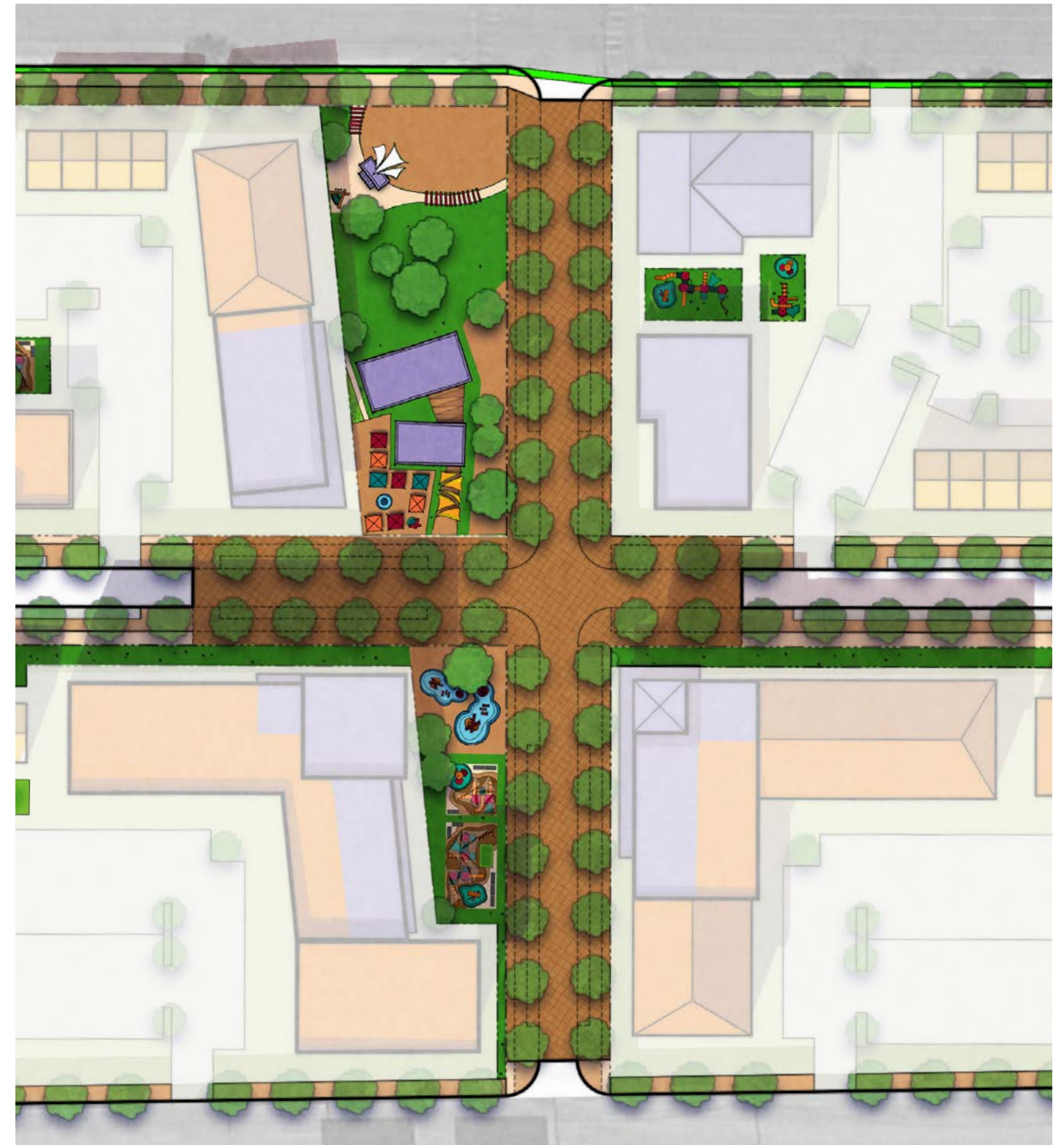


5. THE HEART AT J STREET

Outdoor Community Spaces

- Amphitheater/Performance Space
- Market Plaza (for festivals, food trucks, farmer's markets, etc.)
- Splash Pad/Water Feature
- Larger playground
- Public art & place-making

- COMMUNITY AMENITY SPACES
- COMMUNITY OPEN SPACE
- PLAZA GATHERING SPACE



J STREET TODAY



THE HEART AT J STREET



CSO/VDA/2022

THE HEART AT J STREET



Partner Programming Space

Splash Pad & Playground

Partner Programming Space

Partner Programming Space

Market Plaza

Partner Programming Space

Early Childhood Center

Traffic Calming

Amphitheater

Bus Stop

CSO/UDA/2022

CONNECTING TO THE HUNDRED PLAN-IN-ACTION

Improve connections to planned amenities:

- 1 Cox Innovation Center (completed)
- 2 CSN Westside Education & Training Center
- 3 Market Hall/Culinary Incubator
- 4 Small Business Support Center
- 5 Co-Op Market at James Gay Park
- 6 West Las Vegas Holistic Wellness Center
- 7 Jackson Avenue Corridor
- 8 Obodo Urban Farm
- 9 Future West Las Vegas Library

Add J Street as a complete Street to slow traffic and connect residents to:

- 10 Wendell P. Williams Elementary
- 11 Doolittle Community Center, Doolittle Active Adult Center, West Las Vegas Arts Center, West Las Vegas Library



THREE PRIORITY EARLY ACTION PROJECTS

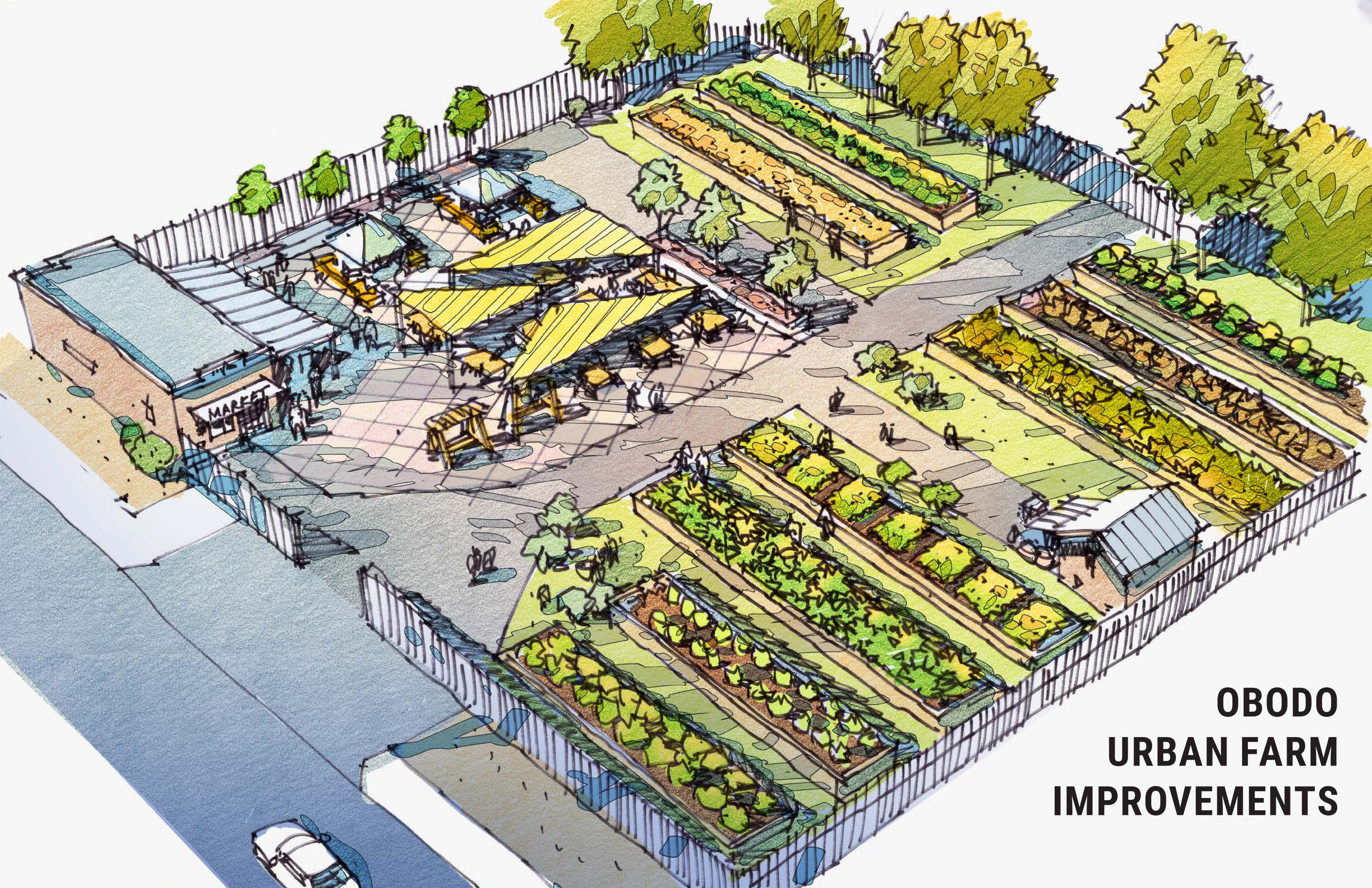
Let's Get Started!



1. OBODO URBAN FARM IMPROVEMENTS

- Obodo Urban Farm is under development at C Street & Monroe Ave.
- An early action project could include additional improvements to invite community gathering:
 - Shade structures
 - Picnic benches
 - Murals





**OBODO
URBAN FARM
IMPROVEMENTS**

2. OUTDOOR PERFORMANCE SPACE

- Residents are interested in creating an Amphitheater/ Performance Space
 - Place for outdoor movies, performances, & gatherings
 - Semi-permanent & could be moved to a future gathering space in the final development
 - Looking for a site for the early action project & more ideas



3. MARBLE MANOR COMMUNITY GARDEN

- Plans for a garden next to the Resident Council Office include:
 - Raised bed garden
 - Murals on the sides of the Buildings



Location of the future Marble Community Garden
(along McWilliams Avenue)

MARBLE MANOR COMMUNITY GARDEN



PEOPLE PLAN

Supportive services strategy
under development



WHAT'S NEXT



WHAT HAPPENS NEXT?

2021	2022				2023			
Winter	Spring	Summer	Fall	Winter	Spring	Summer	Fall	Winter



Next Step

SHARE YOUR IDEAS TONIGHT

- Open House in the gymnasium

- Six Input Stations:

- 1 Housing Types**
- 2 The Marble Manor Model**
- 3 Indoor & Outdoor Community Amenities**
- 4 Early Action Activities**
- 5 How the Marble Manor plan connects to the neighborhood**
- 6 Ideas & Input**

