

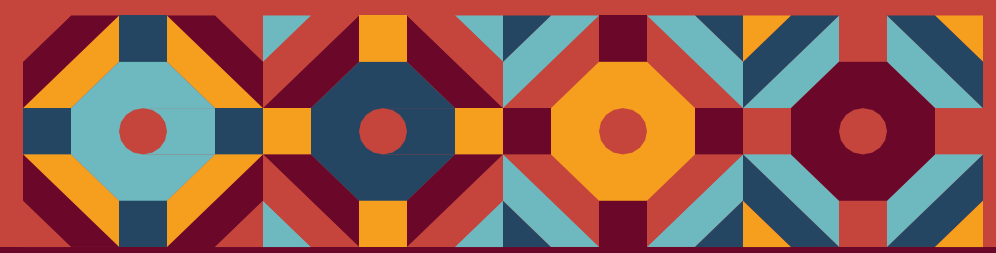


April 12, 2023

DRAFT PLAN FRAMEWORK

MARBLE MANOR/HISTORIC WESTSIDE CHOICE NEIGHBORHOODS PLANNING

Las Vegas, Nevada



AGENDA

- The Planning Process So Far
- The Future of the Marble Manor Site
- Beyond Housing – Neighborhood & People Principles
- Early Action Activity Update
- What's Next?
- Join the Conversation!



PLANNING PROCESS



PLANNING TIMELINE



We are Here

NOVEMBER STUDIO SESSIONS



Monday, Nov. 14th
Ambassador Studio Session

Tuesday, Nov. 15th
Resident Studio Session
Neighborhood Studio Session

Wednesday, Nov. 16th
Youth Studio Session

Thursday, Nov. 17th
Community Studio Session

THE FUTURE OF THE MARBLE MANOR SITE



FROM PUBLIC HOUSING TO MIXED-INCOME

Mixed-Income means:

Families earning a range of incomes live together in the same community and housing.

The future housing will:

1. **Replace every existing unit at for public housing families**
2. **Add new affordable housing**
3. **Add unrestricted housing**

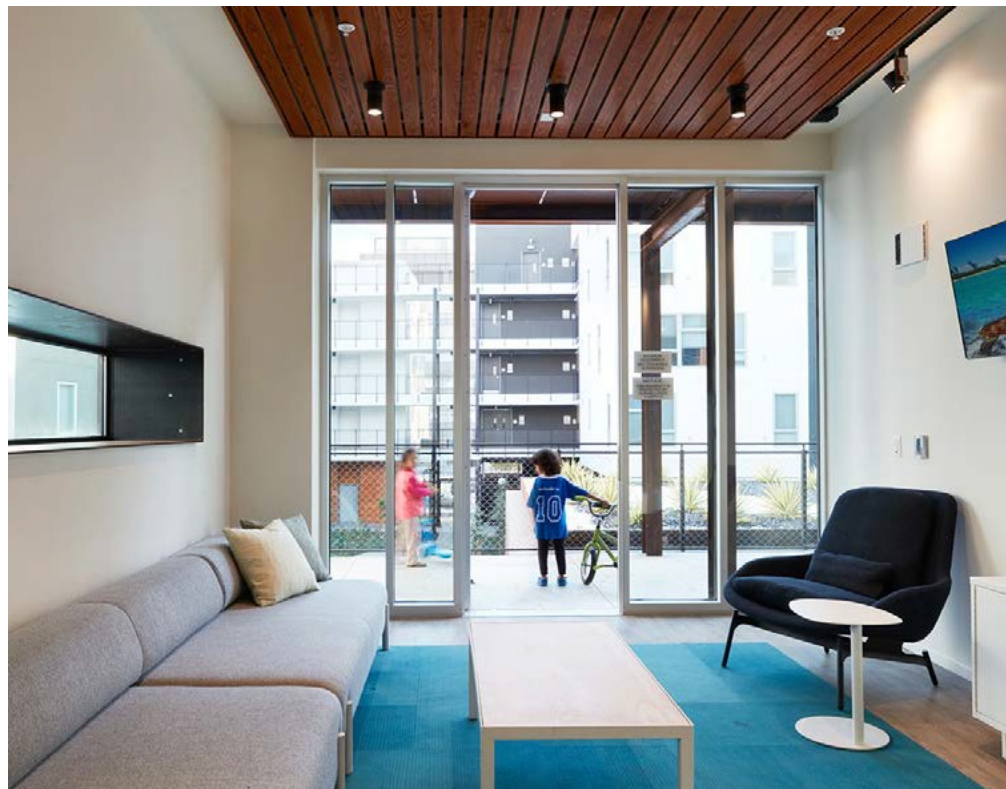


INCREASING CHOICES FOR HOUSING

- Range of housing types including:
 - Townhouses
 - Apartments in small buildings
 - Apartments in larger buildings with elevators
- Housing that serves all people:
 - Families with children
 - Adults
 - Seniors
 - People with disabilities & special needs



IN-UNIT AMENITIES FOR NEW HOUSING



MIXED-INCOME HOUSING PLAN – 600+ UNITS



INCREASING CHOICES—BUILDING & UNIT TYPES



Building Type Diagram

Townhouses



Stacked Flats



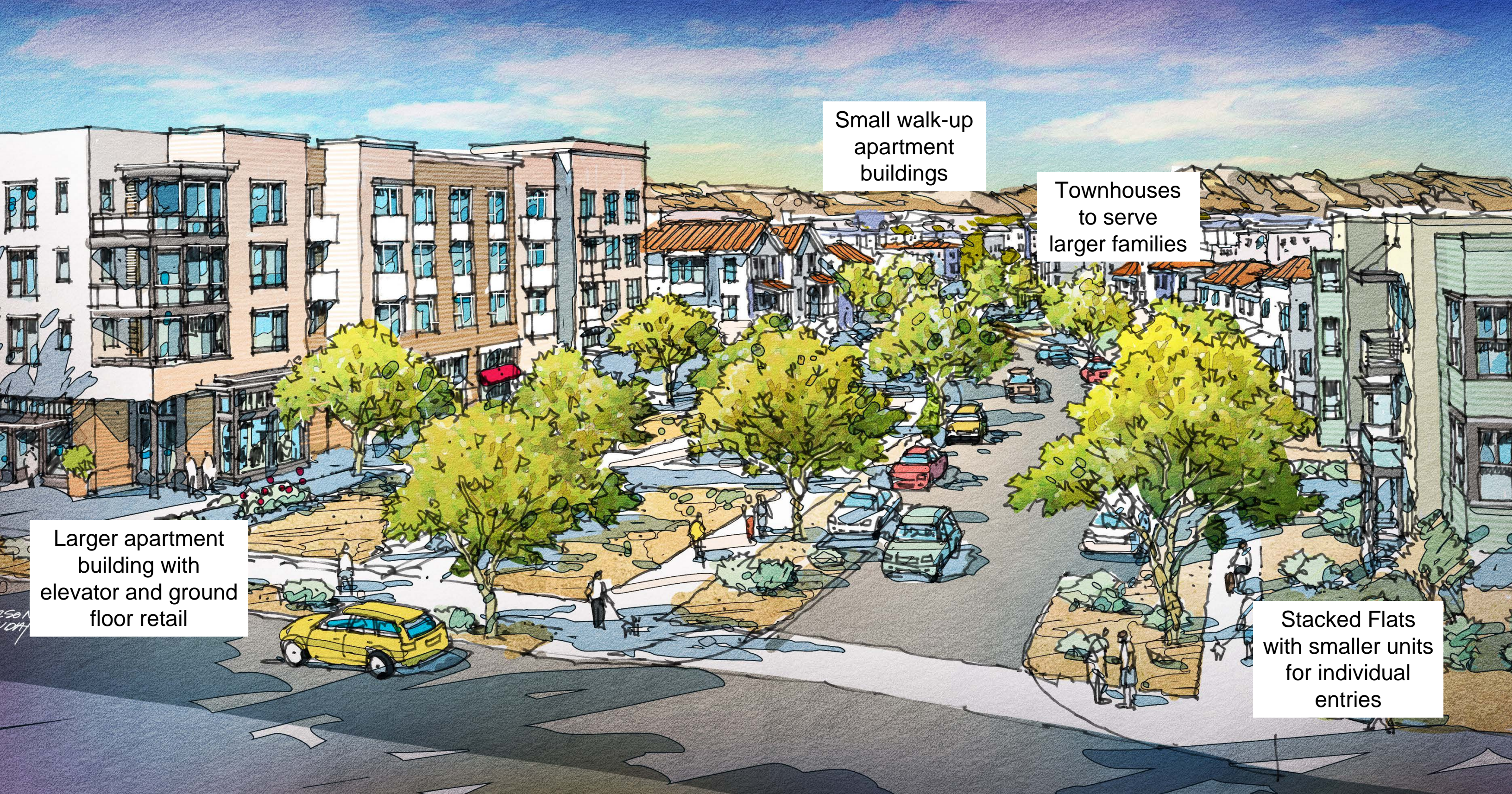
Larger Apartment Buildings



Walk-Up Apartments



INCREASING CHOICES—BUILDING & UNIT TYPES



Small walk-up apartment buildings

Townhouses to serve larger families

Larger apartment building with elevator and ground floor retail

Stacked Flats with smaller units for individual entries

MARBLE MANOR ON-SITE AMENITIES

SUGGESTED EARLY ACTION IDEAS & HOW THEY'LL BE INCORPORATED



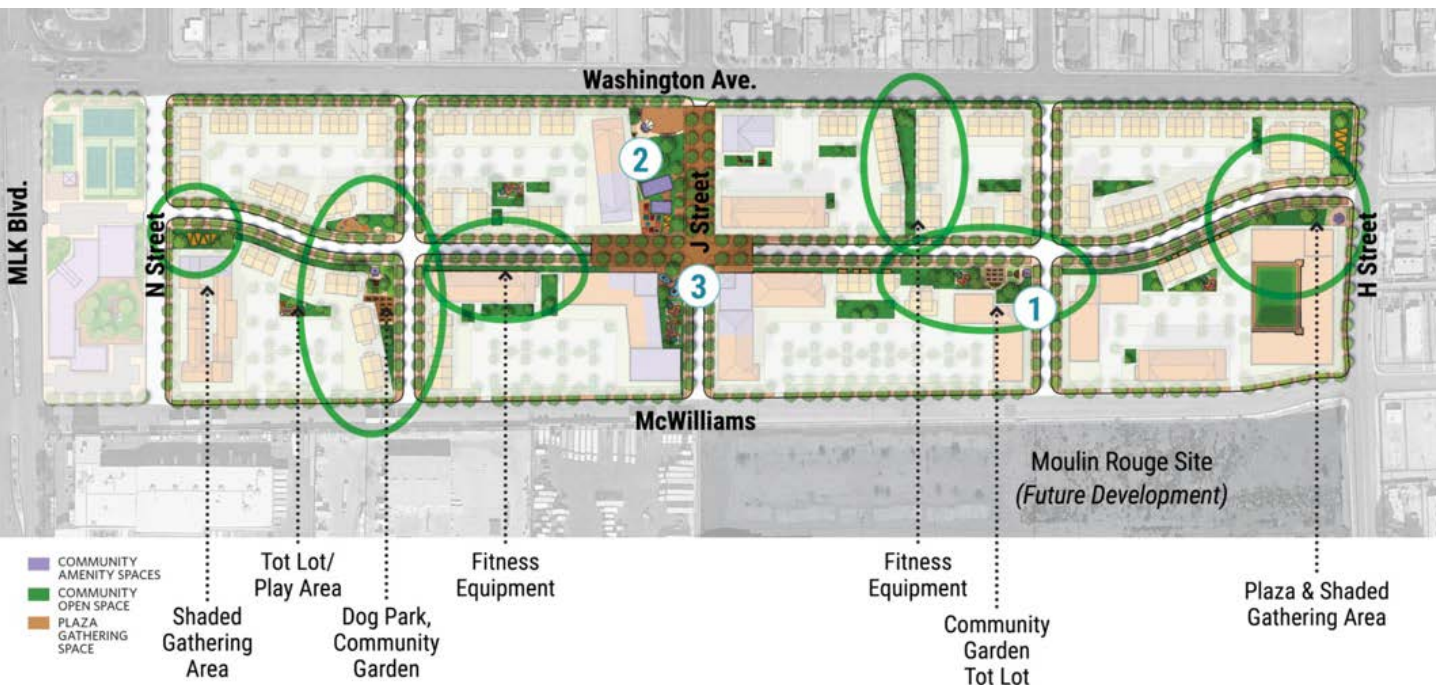
1 Marble Manor Community Garden



2 Outdoor Performance Space



3 Traffic Calming on J Street



MIXED-INCOME HOUSING PLAN – 600+ UNITS

BEYOND HOUSING

Neighborhood & People



- Bolster Opportunity through Education, Training, Jobs, and Entrepreneurship
- Foster Health and Wellness
- Support Children and their Families
- Build Community and Connections

BOLSTER OPPORTUNITY

through Education, Training, Jobs, and Entrepreneurship

- Workforce Development Center
- College of Southern Nevada Westside Education and Training Center
- Improve Digital Literacy thru Cox Innovation Lab at Strong Future Technology Training Center
- Market Hall and Small Business Incubator
- Historic Westside School Campus (EmployNV Career Hub, Dialysis Training Center, Culinary Training Academy)
- Leverage SNRHA's ROSS Coordinator to connect Marble Manor residents

FOSTER HEALTH AND WELLNESS

West Las Vegas Holistic Wellness Center

Provide Health Education and Wellness Programming

- Community Health Worker Training
- SNRHA's Minority Health Initiative
- Obodo Collective's programming

FOSTER HEALTH AND WELLNESS

Ensure Access to affordable, health, and fresh foods

- Marble Manor community garden
- Obodo Collective's Urban Farm
- Re-imagine James Gay Park/
Vertical hydroponics, growing
containers, co-op market
- Expansion of Mario's Market



Obodo Collective's Urban Farm will be built out as the Choice Neighborhood Early Action project.



The Historic Westside Urban Farm is operational at James Gay Park. Two climate controlled shipping containers will grow vegetables, herbs, berries, and more for the neighborhood.



Mario's West Side Market will be expanded to offer more fresh produce, over-the-counter medications, and a bakery.



The new West Las Vegas Holistic Wellness Center will offer primary care, behavioral health services, dental, and other specialty services to promote the health of Historic Westside residents.

FOSTER HEALTH AND WELLNESS

Develop Open Space and amenities to promote exercise and socializing

- Marble Manor: walking paths, water feature, tot lots and play areas, possible outdoor fitness equipment, and a plaza space
- Some of these amenities will also serve all Historic Westside residents

Incorporate sustainable and resilient building practices that will result in healthier buildings for Marble Manor residents

SUPPORT CHILDREN & THEIR FAMILIES

Expand access to high-quality, evidence-based early education programs

- Maximize use of Strong Start Mobile Pre-K Academy
- Develop Early Learning Center at Marble Manor



A new early learning center and the relocated A.D. Guy Center will be located in the "Heart at J Street".

SUPPORT CHILDREN & THEIR FAMILIES

Increase participation in high-quality, out-of-school education programs

- Promote A.D. Guy Center (short-term)/ Relocate to Heart at J Street (long-term)
- Promote programs at Cox Innovation Lab
- Grow partnership with and enrollment in Andre Agassi Boys & Girls Club
- Reinvigorate partnership with Doolittle Community Center
- Explore new programming opportunities, i.e. Upward Bound

SUPPORT CHILDREN & THEIR FAMILIES

Provide wrap-around services to school-aged children and their families

- Strengthen and tailor collaboration with The Harbor; add Marble Manor to schedule for Mobile Outreach Program
- Eliminate chronic absenteeism among Marble Manor youth in collaboration with Clark County's Truancy Prevention Outreach Program (TPOP)
- Connect eligible Marble Manor households to Roseman University's Genesis Program



BUILD COMMUNITY & CONNECTIONS

Improve Physical Connectivity

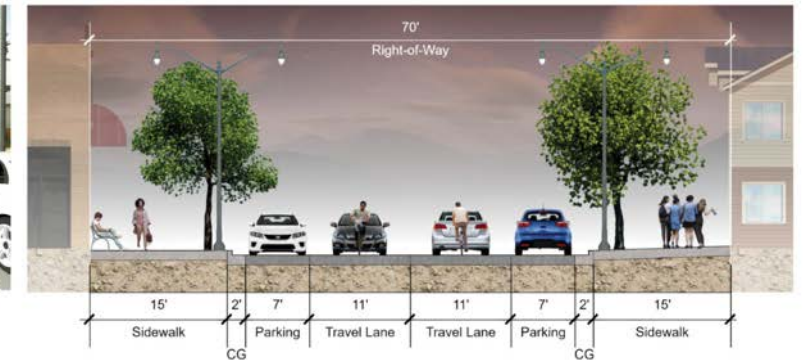
- Complete Streets Improvements
- Enhance Open Space Network with Marble Manor Green Spine

Placemaking & Celebration of African American History

- Heart at J Street
- Marble Manor Gateways
- African American Museum and Cultural Arts Center
- Public Art Projects
- Pioneer Trail Sites



Complete Streets investments planned for the Historic Westside include intersection, streetscape, and gateway improvements.



BUILD COMMUNITY & CONNECTIONS

Improve Public Safety

- Effectively Use Forums like First Tuesday to foster communication with Bolden Area Command
- Leverage youth & family supports like The Harbor/TPOP
- Improve neighborhood appearance
- On-site space for security office/police substation
- Design physical environments to promote safety & security for all



BUILD COMMUNITY & CONNECTIONS

Foster Community Engagement

- Strengthen and sustain strategic partnerships
- Develop communication strategy
- Leverage SNRHA's ROSS Coordinator
- Support Resident-led Initiatives
- Create quality gathering spaces at Marble Manor
- Leverage the Historic Westside School Community Design Center

Increase Digital Access and Connectivity thru AACED

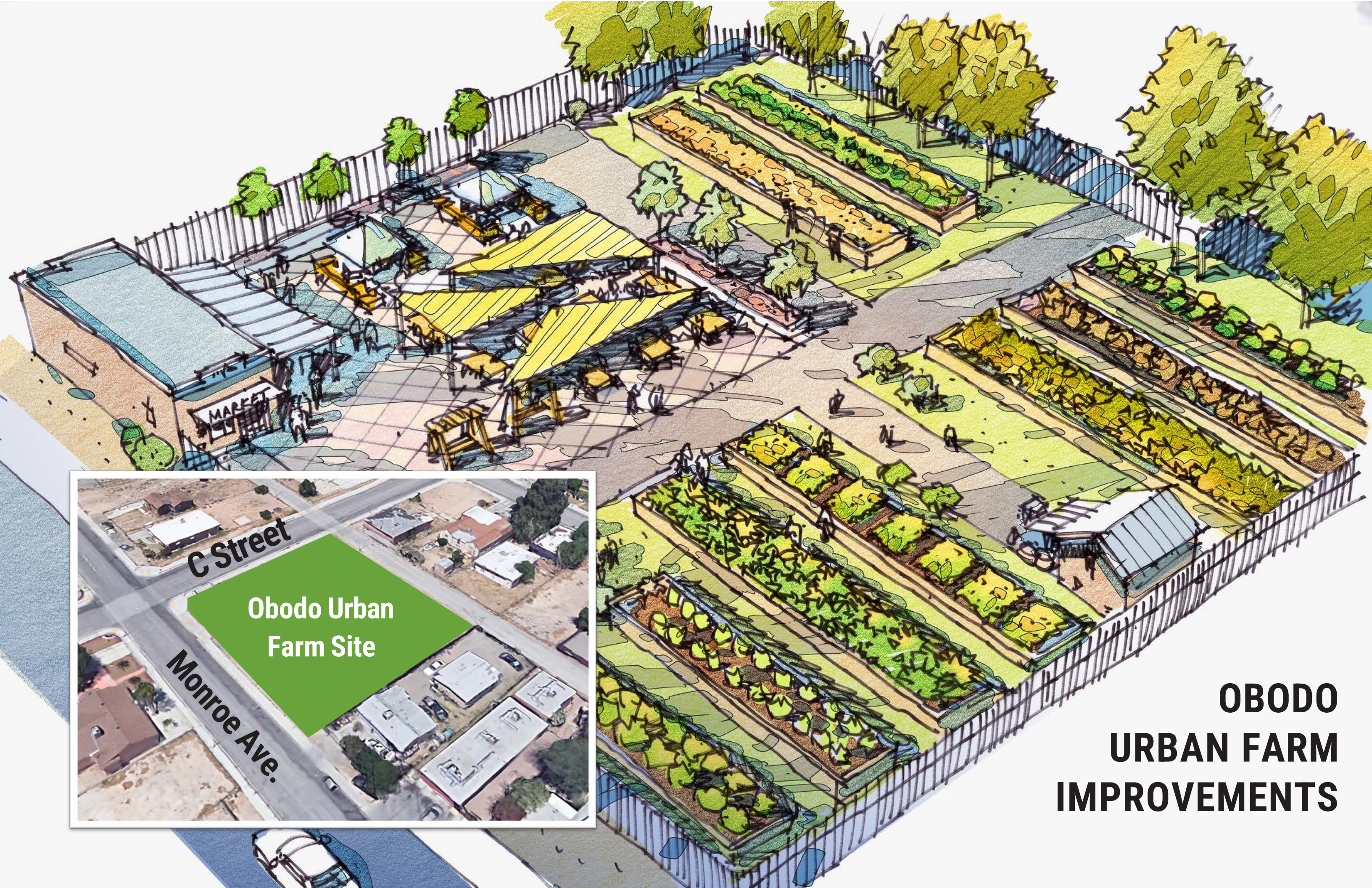


Events such as Love on Jackson bring the community together and provide opportunities for art, food, culture, and music-based engagement.

EARLY ACTION PROJECT

Let's Get Started!





**OBODO
URBAN FARM
IMPROVEMENTS**

WHAT'S NEXT



WHAT HAPPENS NEXT?



Next Step

SHARE YOUR IDEAS TONIGHT

- Open House with Five Input Stations:
 - Marble Manor Site Plan & Amenities
 - Bolster Opportunity through Education, Jobs, and Entrepreneurship
 - Foster Health and Wellness
 - Support Children and Their Families
 - Build Community and Connections

