

Existing Conditions at Marble Manor INCOME & EMPLOYMENT

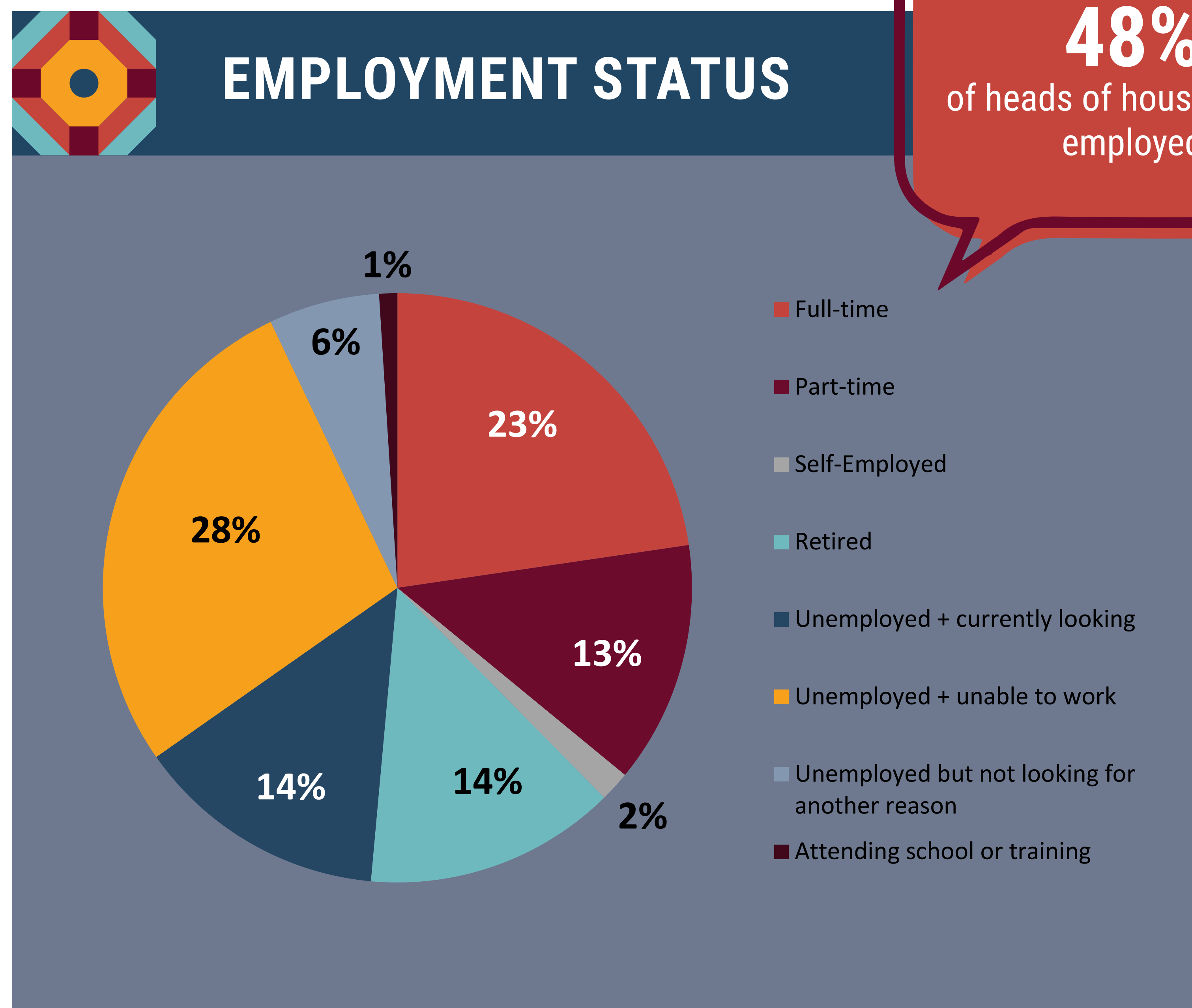
Median Income

\$10,455
Marble Manor

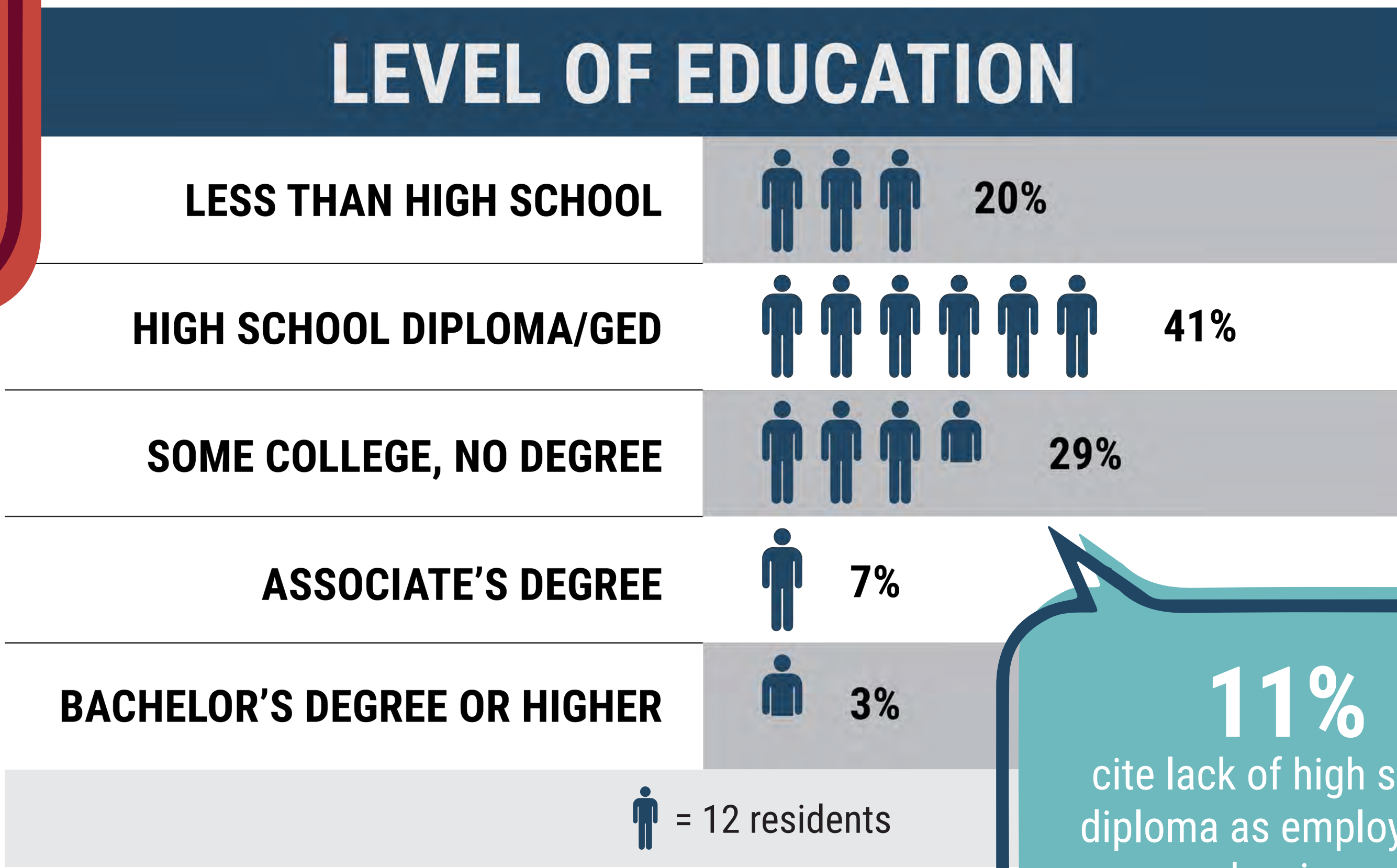
\$24,910
Historic Westside

\$59,707
Las Vegas

81% of households are extremely low income



48%
of heads of household are employed



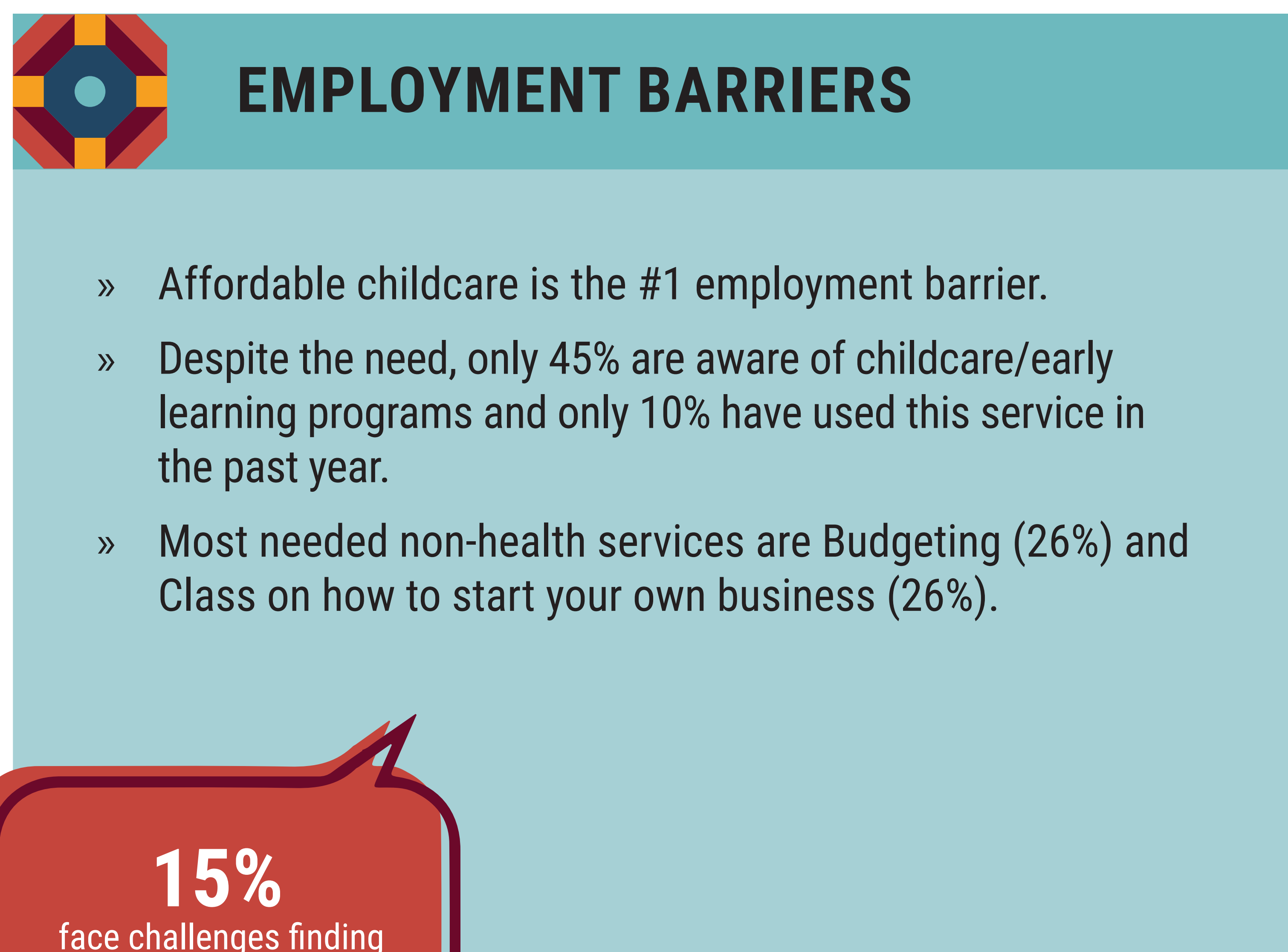
11%
cite lack of high school diploma as employment barrier

Percent with High School Diploma

78%
Marble Manor

70%
Historic Westside

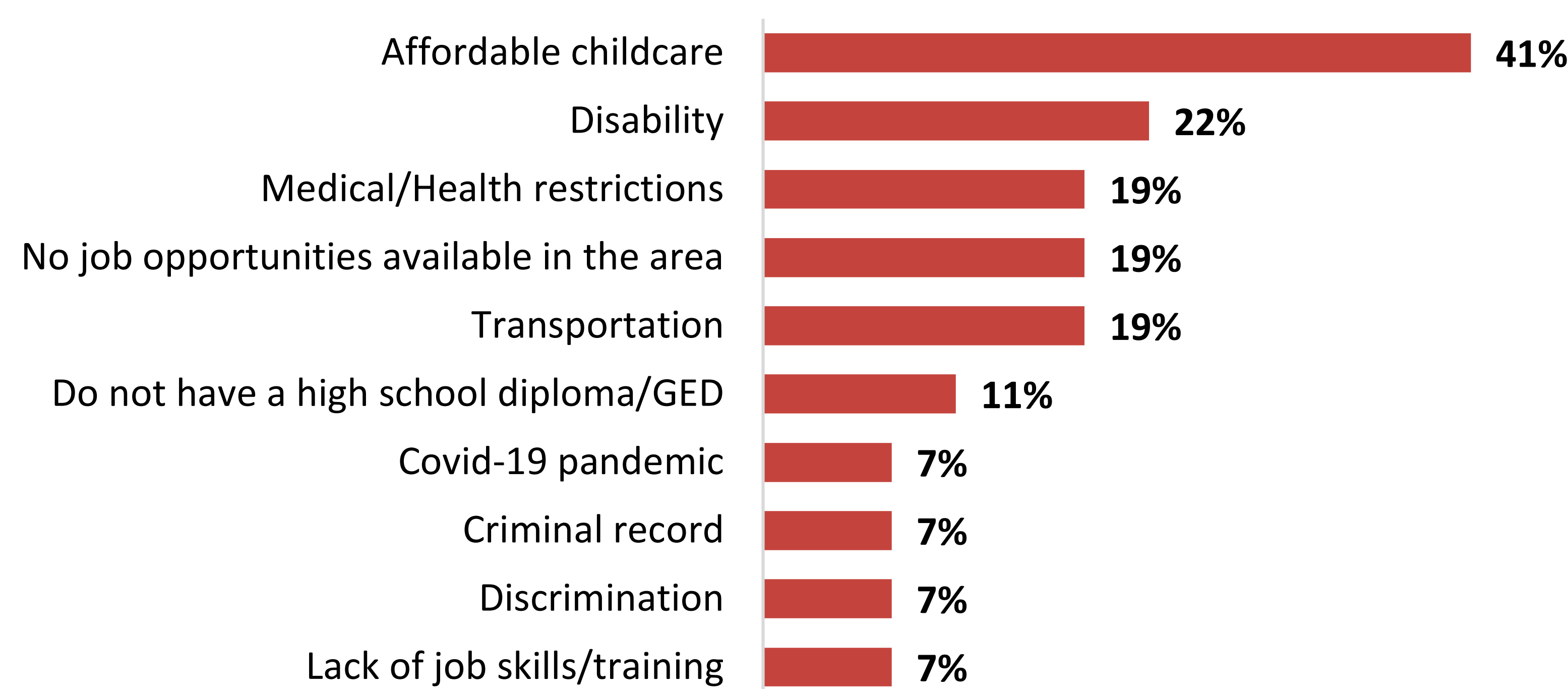
85%
Las Vegas



15%
face challenges finding and keeping work

23% said someone in household needs GED classes

Challenges in Finding and Keeping Work



Existing Conditions at Marble Manor YOUTH & EDUCATION

POPULATION UNDER 18

56%
Marble Manor

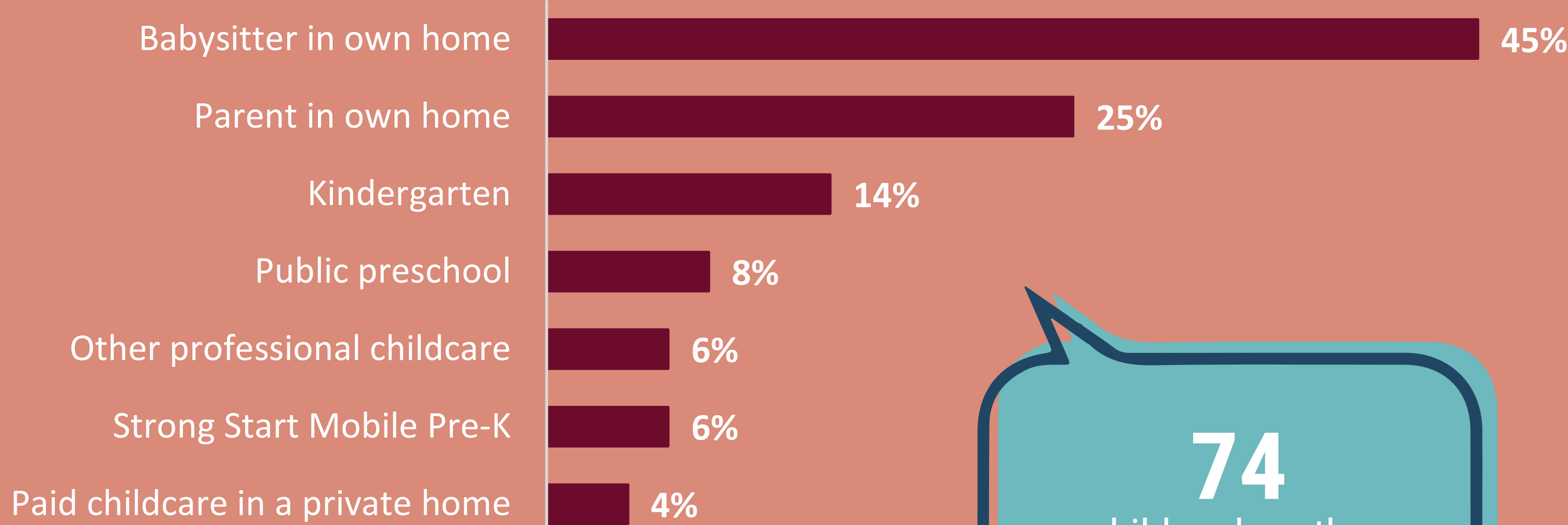
28%
Historic Westside

24%
Las Vegas

72% of households have children

EARLY EDUCATION

Childcare Arrangements



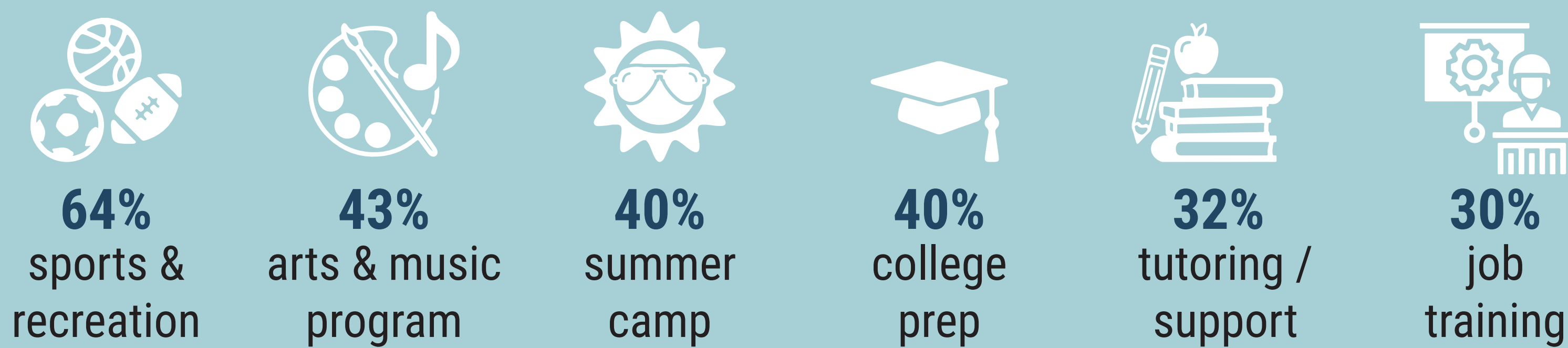
74
children less than
5 years old

46%
have a child that
participates in youth
programs

YOUTH PROGRAMS

- » The most popular programs are:
 - » **22%** Youth sports leagues
 - » **16%** Non-sport school-based after school activities
 - » **16%** Tutoring or academic support programs
- » Most common barriers to participation are:
 - » Concerns about safety (16%)
 - » Programs cost too much (15%)
 - » Hours/schedule (12%)
- » Youth programming (24%) was among the top services needed at this time.

Interest in Future Participation in Youth Programs

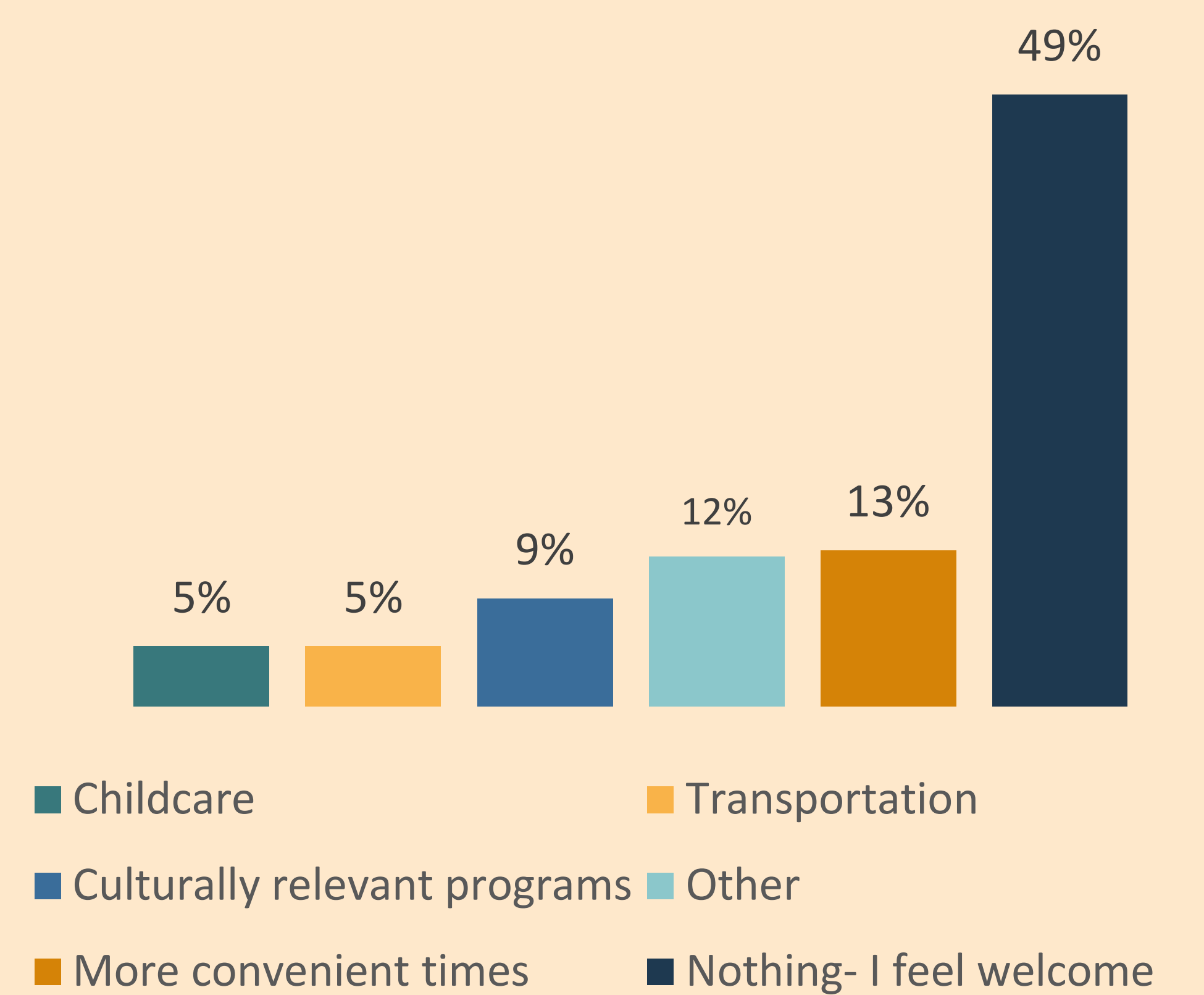


PARENT ENGAGEMENT

28%
of parents participate in PTA or other
school activities

- » 312 school-age children at Marble Manor.
- » 49% of parents feel welcome at school, but the following would increase participation:
 - » 13% More convenient times
 - » 9% Culturally relevant programs
 - » 5% Transportation
 - » 5% Childcare

What would make you feel more welcome at your child's school?



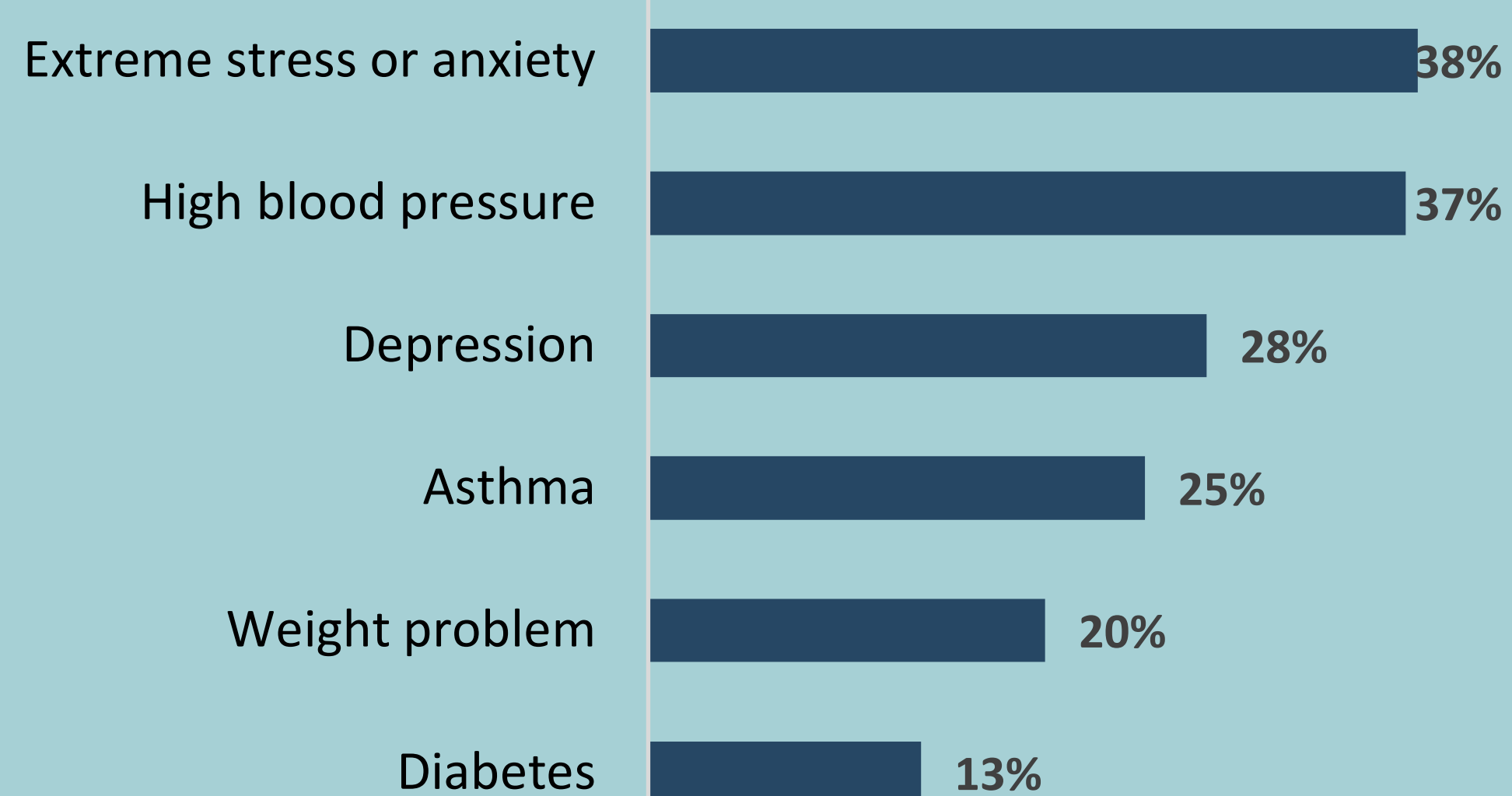
Existing Conditions at Marble Manor HEALTH & SPECIAL NEEDS

88% face no challenges accessing quality affordable health care

HEALTH CONCERNS

» More than half of residents with children (54%) report that they have a child with asthma.

Health Conditions

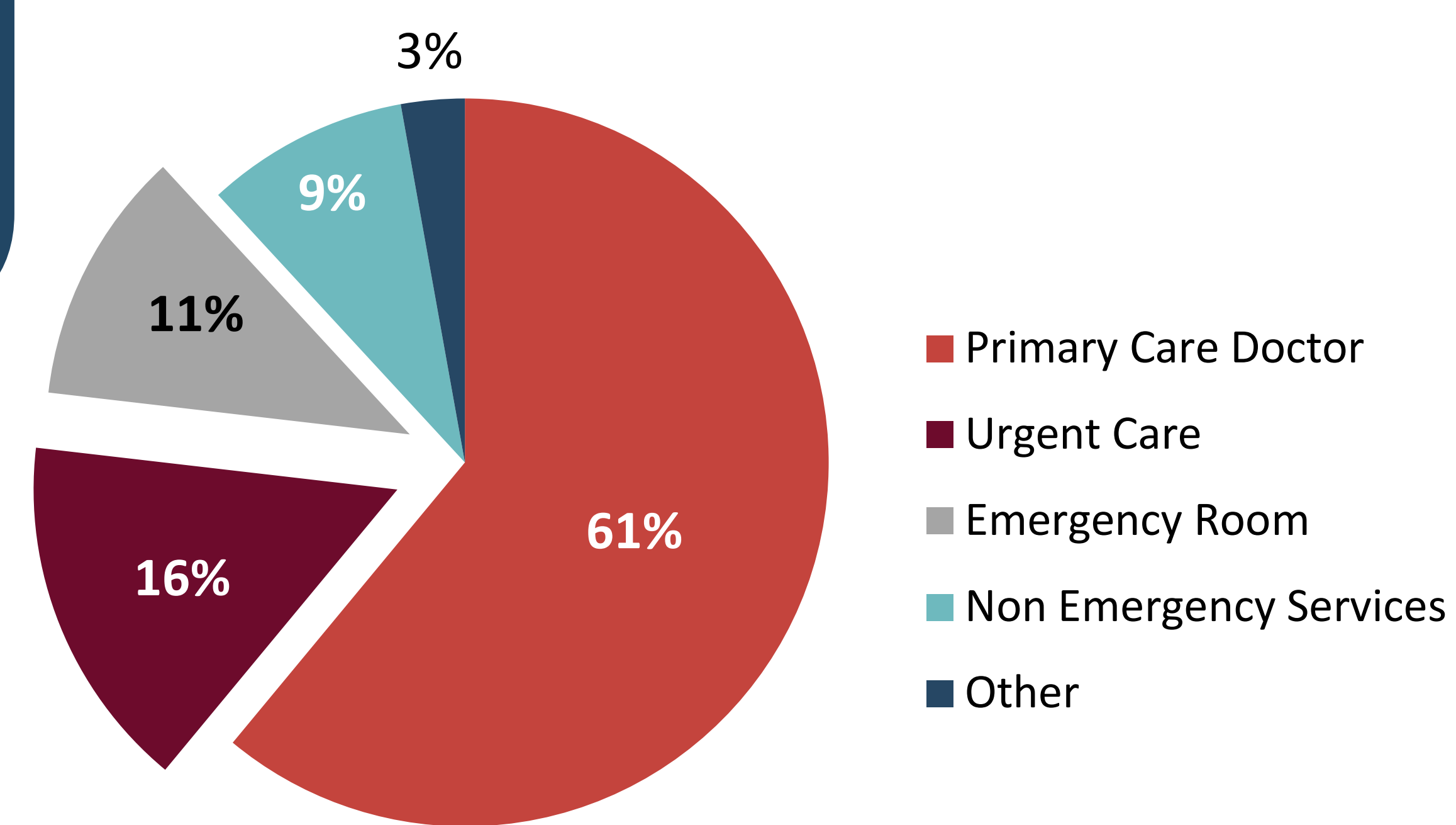


27% go to a hospital or urgent care most often when sick or in need of health advice

56% rate their health as excellent or good

97% of heads of households have health insurance

Medical Care



- » 82% report annual medical check-ups
- » 94% report their children receive annual medical check-up

80% rate their healthcare services as Good or Excellent

CHALLENGES



Dental services is the greatest unmet health need (30%).



Among those who face challenges, cost (51%) was the #1 issue

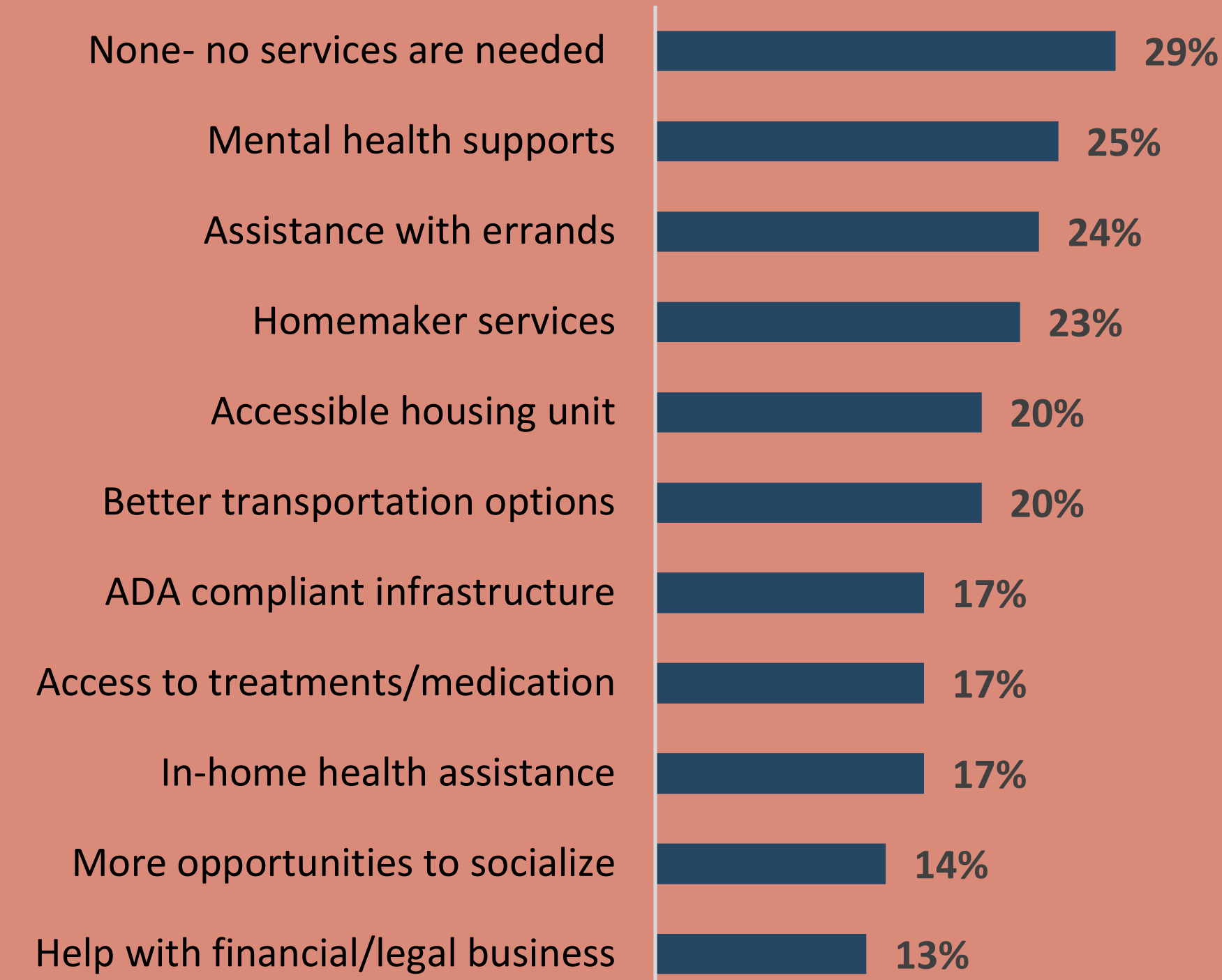
FOOD

- » Grocery store/Supermarket (83%) and Farmers market (79%) were identified as the most needed amenities in the neighborhood.
- » Residents travel to Smith's (37%) or Walmart (31%) most frequently to do their grocery shopping.
- » Food distribution was the #1 service used in the last year (26%)
- » Cost (21%) and the low quality of fruits/veggies in local stores (18%) are a barrier to healthy eating

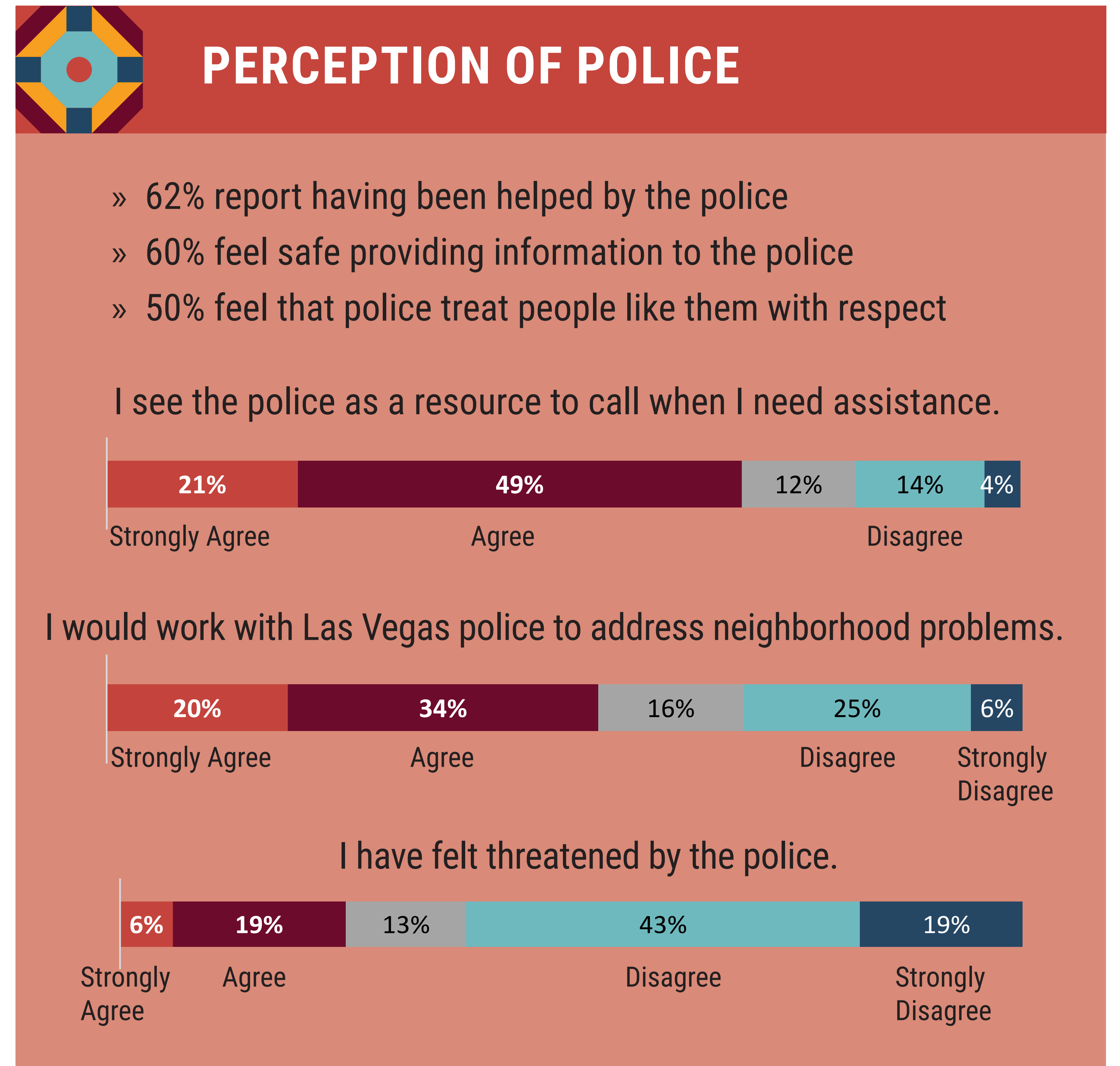
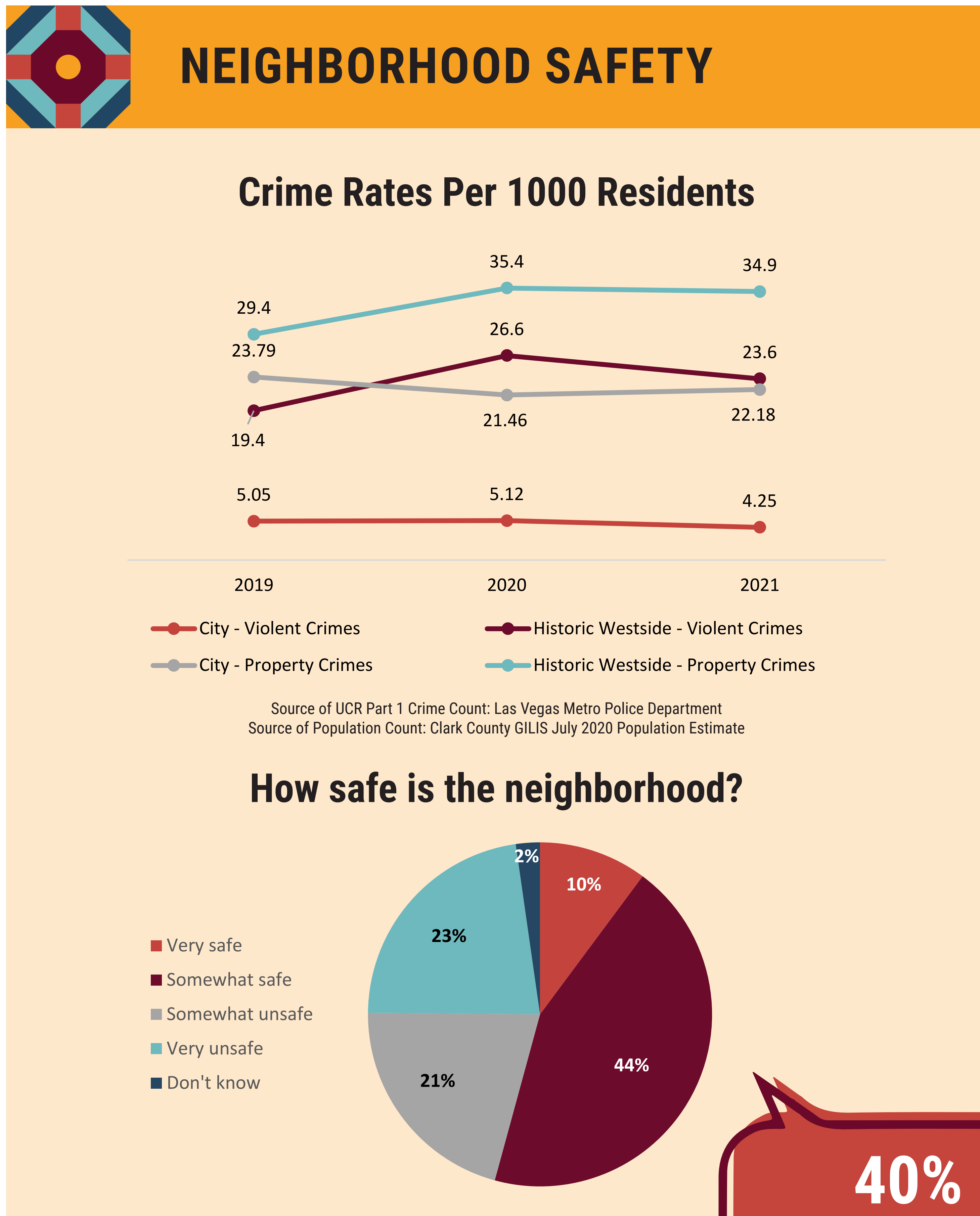
SPECIAL NEEDS

- » 40% have a household member with a special need
- » 37% need special features in a new unit:
 - » 25% physical accessibility
 - » 13% hearing accessibility
 - » 8% visual accessibility

Services for residents with disabilities



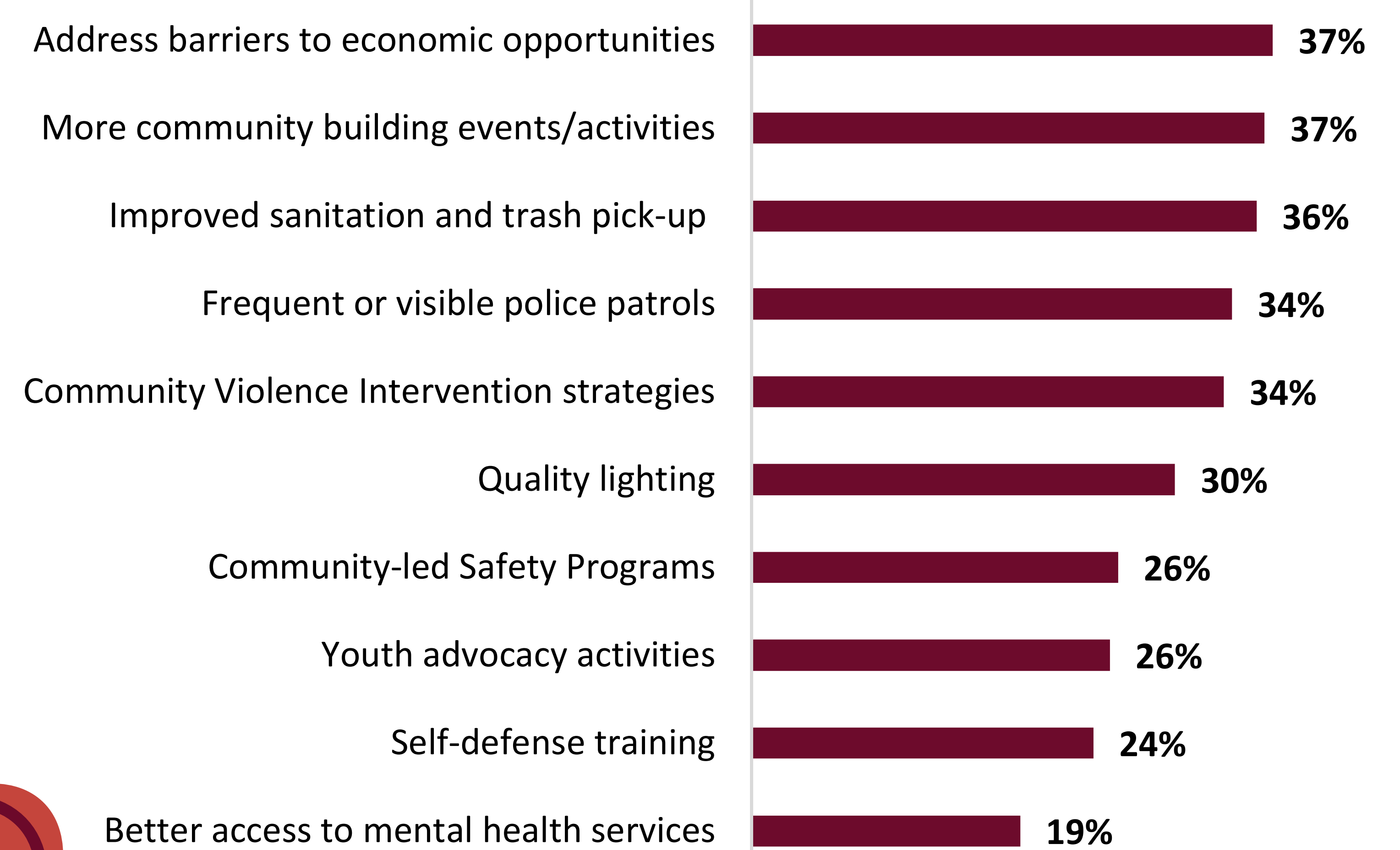
Existing Conditions at Marble Manor PUBLIC SAFETY



44% feel unsafe in the neighborhood



Top choices for improving health and safety



Existing Conditions at Marble Manor HOUSING & RELOCATION

RELOCATION

If relocation is deemed necessary for redevelopment
83% OF RESIDENTS PREFER TO MOVE TO A PRIVATELY OWNED UNIT
 with a Section 8 Voucher in one of the following locations

19%

Historic Westside

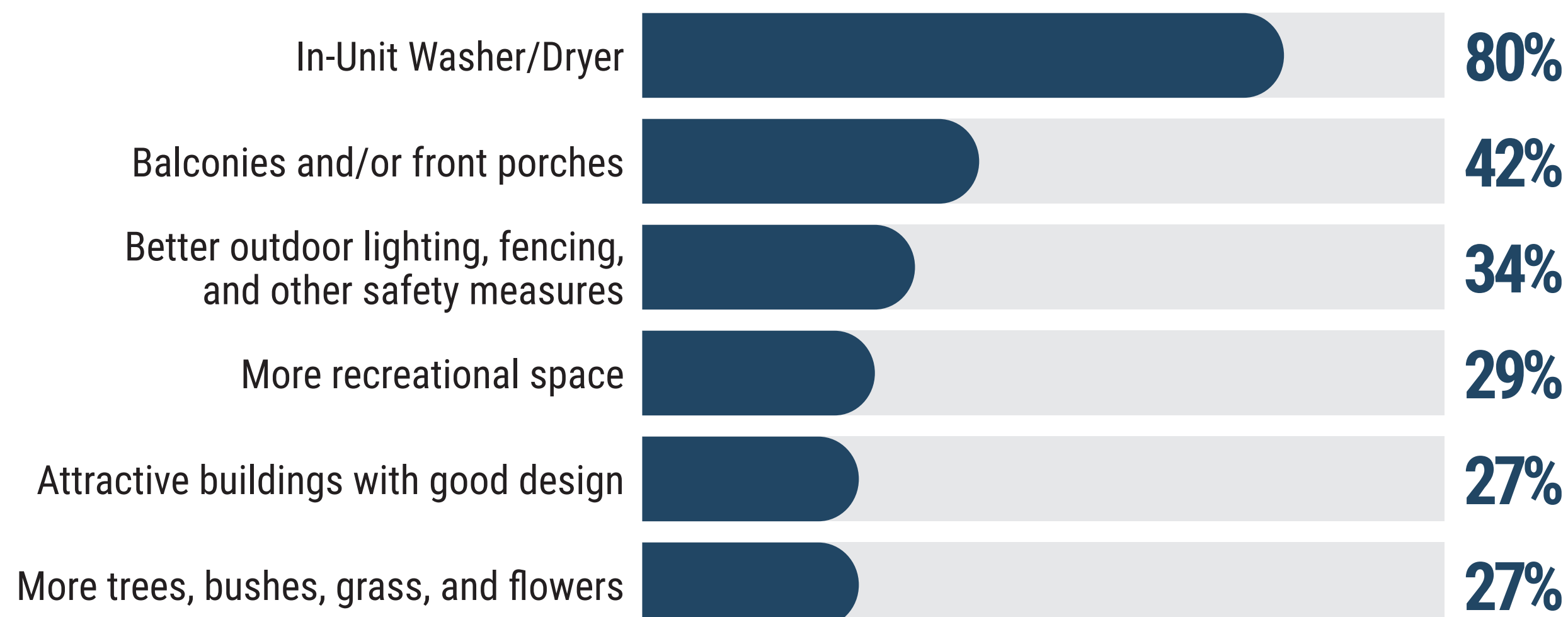
53%

elsewhere in Las Vegas

11%

outside of Las Vegas

DESIRED PHYSICAL IMPROVEMENTS



MARBLE MANOR SITE

- » There are 235 units on the current site of Marble Manor
- » In the redevelopment of Marble Manor, each of these 235 units will be eligible for 1:1 replacement
- » For residents interested in returning, **37% will need a unit with special accommodations for physical, visual, and hearing needs**



1 bedroom (dark red)
 2 bedroom (pink)
 3 bedroom (orange)
 4 bedroom (yellow)

Every family at Marble Manor who currently lives there will have first right to return to the new housing once it is built

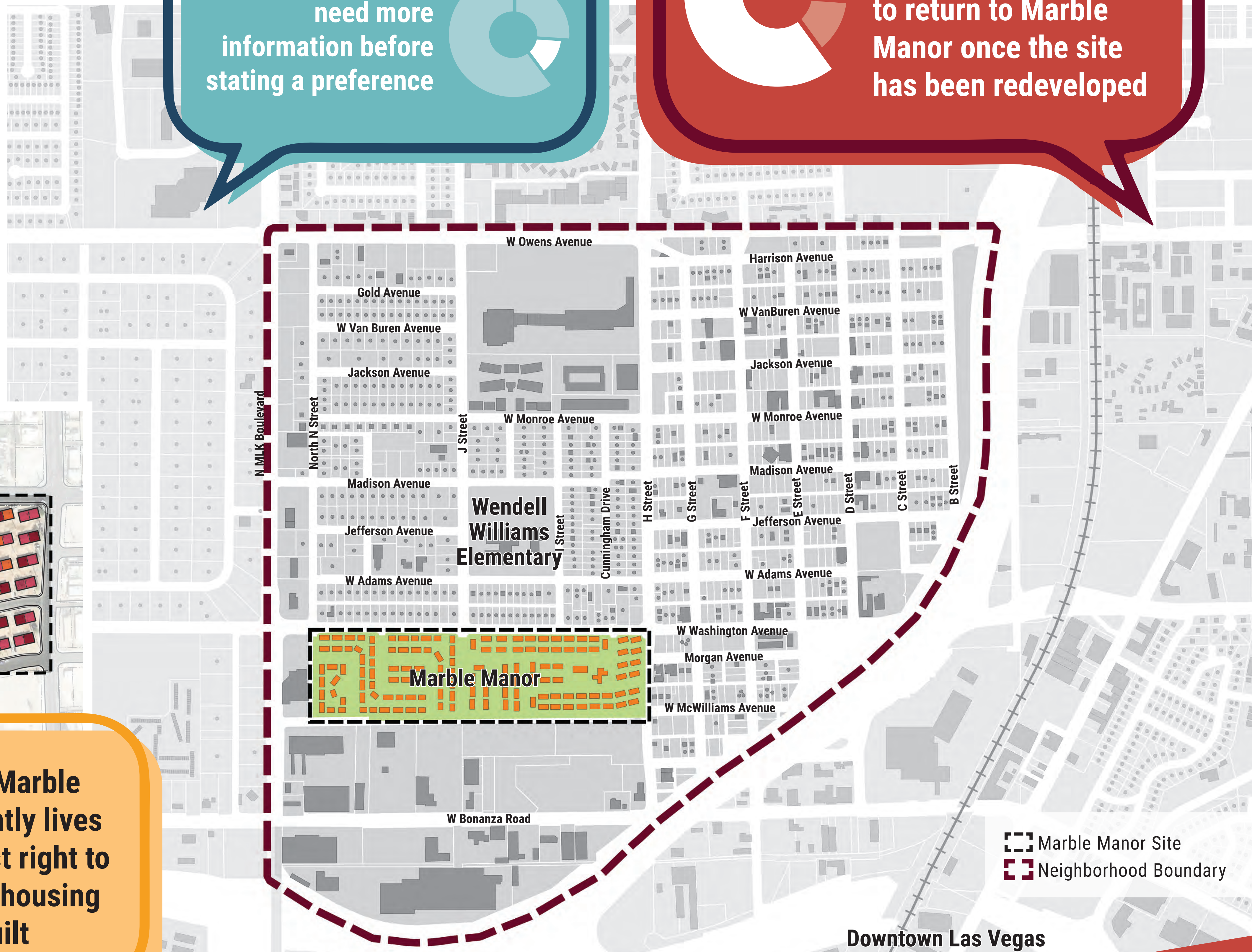
PHOTOS OF EXISTING HOUSING

- » The repetitive, one-story buildings of Marble Manor are organized along wide and mostly unlined streets with little landscaping in the pedestrian realm
- » Due to the region's hot and dry climate, shading must be provided throughout the neighborhood
- » Parking for vehicles is located on small driveways in front yards and trash collection occurs along the streets and not hidden behind buildings or along alleys



14% need more information before stating a preference

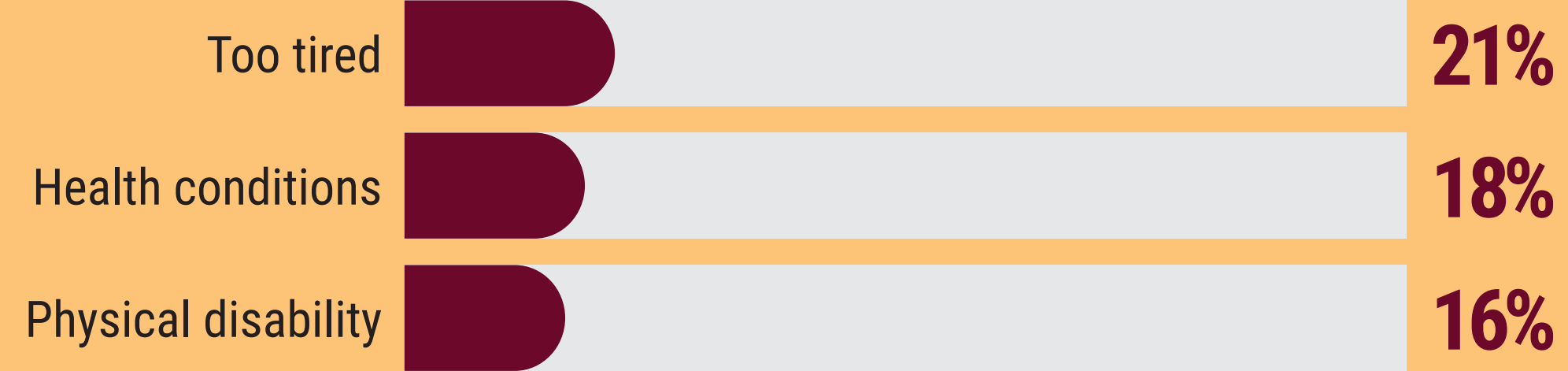
60% of residents would like to return to Marble Manor once the site has been redeveloped



Existing & Desired Amenities PARKS & RECREATION

WHAT IS KEEPING YOU FROM BEING PHYSICALLY ACTIVE?

Top 3 Responses:



Other Answers



60% of residents said the neighborhood needs a gym

DESIRED RECREATIONAL AMENITIES



Pool, Sprinkler, Splash Pads

60%



Picnic and BBQ Area

48%



Playground and Tot Lot

40%



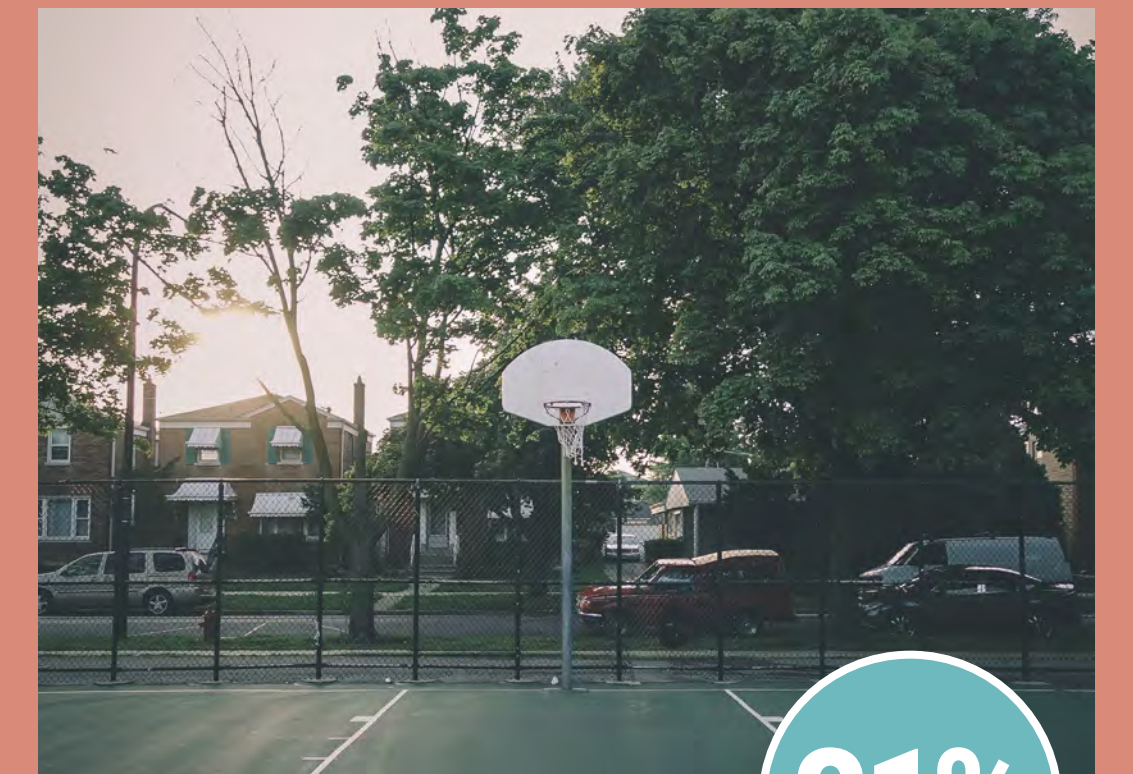
Community Garden

32%



Exercise Trail with Equipment

32%



Ball Field/Court

31%

NEIGHBORHOOD ASSETS

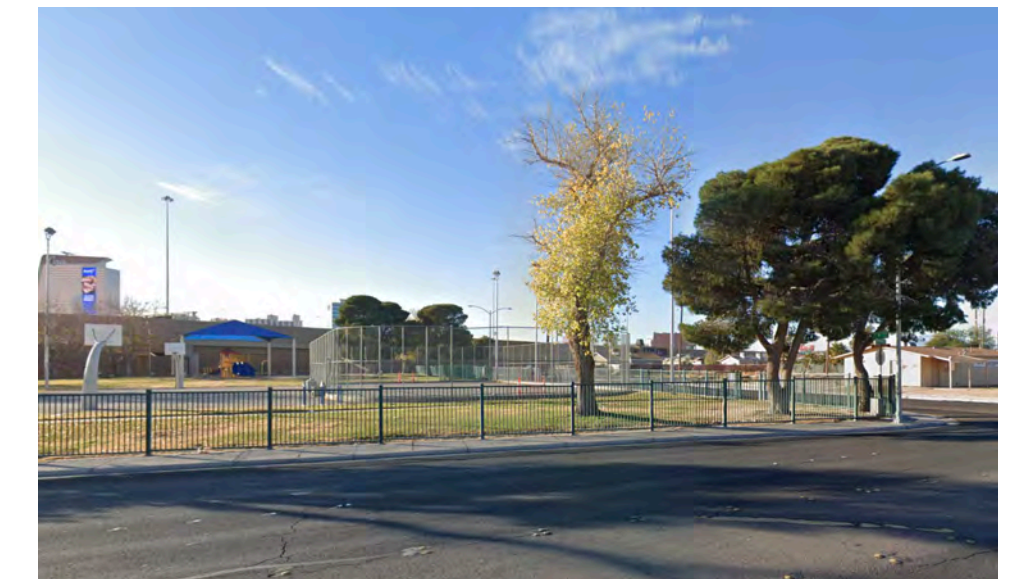
» The neighborhood boundary is severely deficient in adequate parks, open space, and recreation amenities



1 Andre Agassi Boys & Girls Club of Southern Nevada



2 Fitzgerald Tot Lot Park



3 Ethel Pearson Park



JAMES GAY PARK IMPROVEMENTS 4

Improvements to James Gay Park, as a part of the Hundred Plan in Action include:

- » Shipping container growing facilities
- » Vertical, hydroponic growing facilities
- » Co-op market to address food insecurity
- » Workforce housing
- » Job training, employment, & internships
- » Education for K-12+ & community space

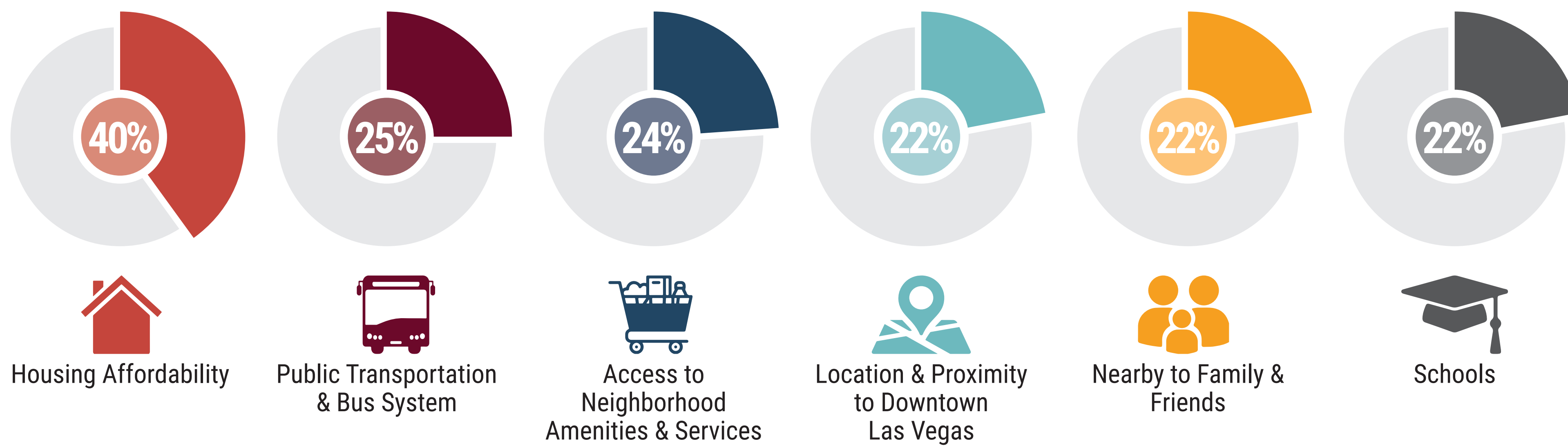


Conceptual Site Plan for James Gay Park



Most Loved Aspects & Desired Improvements NEIGHBORHOOD

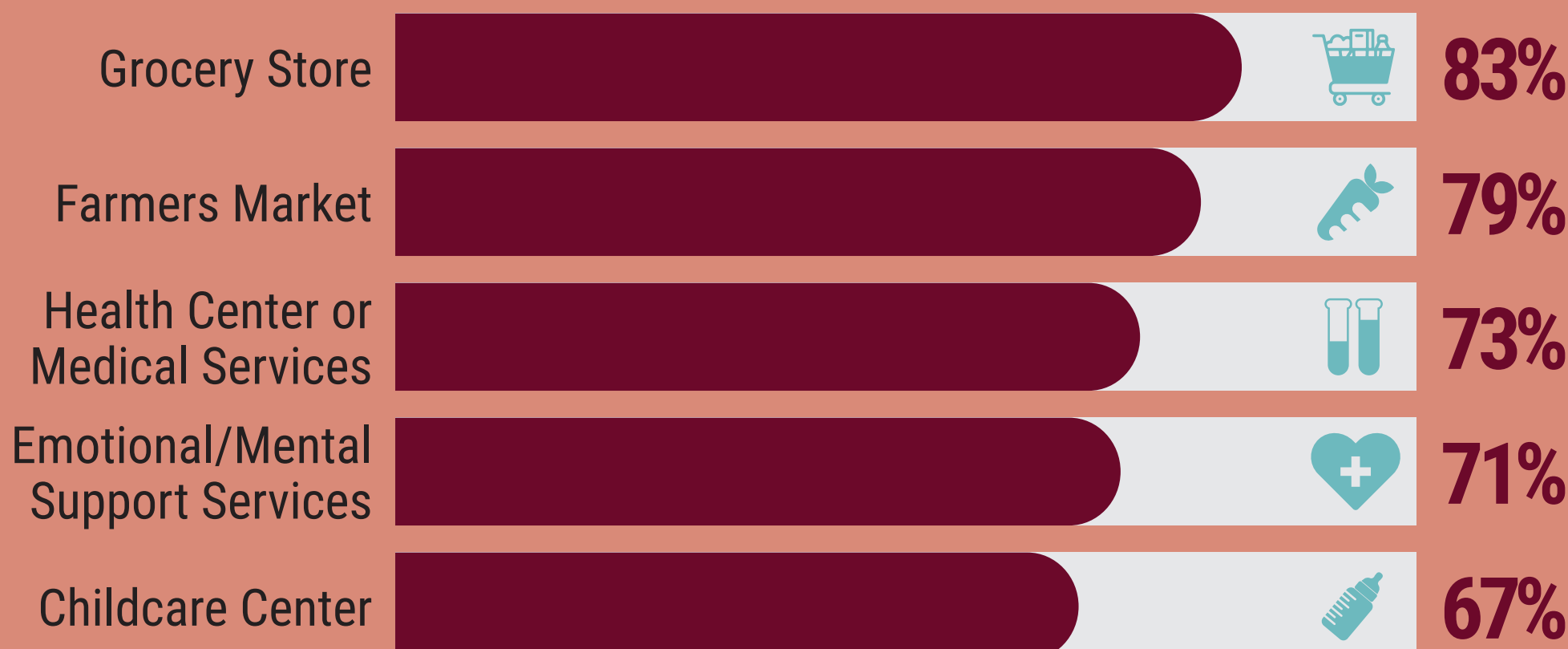
MOST LIKED ASPECTS OF THE HISTORIC WESTSIDE



65%
or 2 out of 3 residents have lived at Marble Manor for less than 5 years

NEIGHBORHOOD IMPROVEMENTS & NEEDED AMENITIES

Most Need Amenities



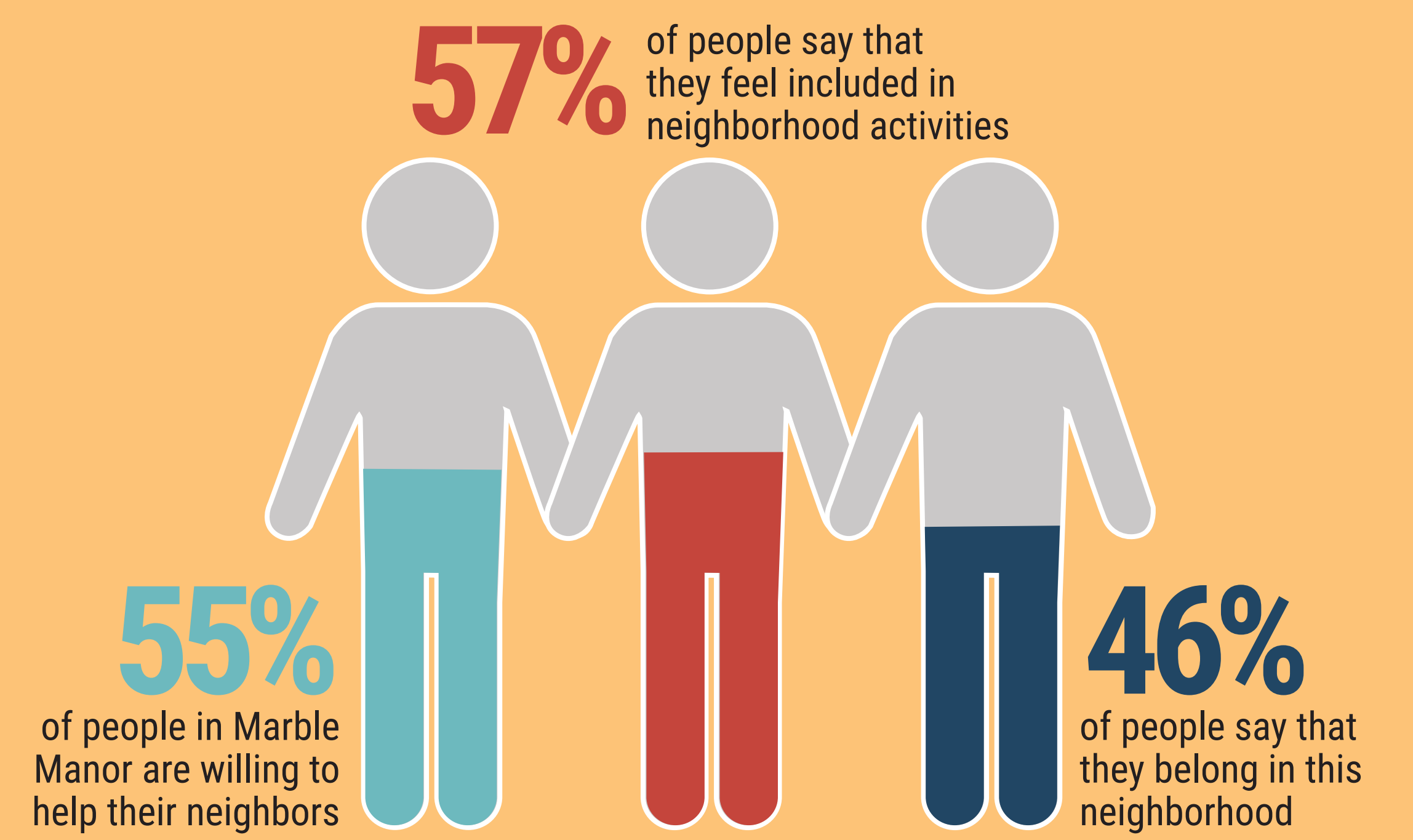
Desired Improvements



More neighborhood conveniences, amenities, and services is the most desired neighborhood improvement

Other desired improvements include more youth programs and activities, improved safety, and additional job opportunities

NEIGHBORHOOD AFFINITY



HUNDRED PLAN IN ACTION

The Hundred Plan in Action is addressing several neighborhood deficiencies through the following completed and planned projects:

- 1 Cox Innovation Center at the Strong Future Technology Training Center
- 2 Strong Start Mobile Pre-K Academy
- 3 Employ NV Career Hub
- 4 CSN Westside Education & Training Center (in planning)
- 5 West Las Vegas Holistic Wellness Center (in planning)

HISTORICALLY SIGNIFICANT

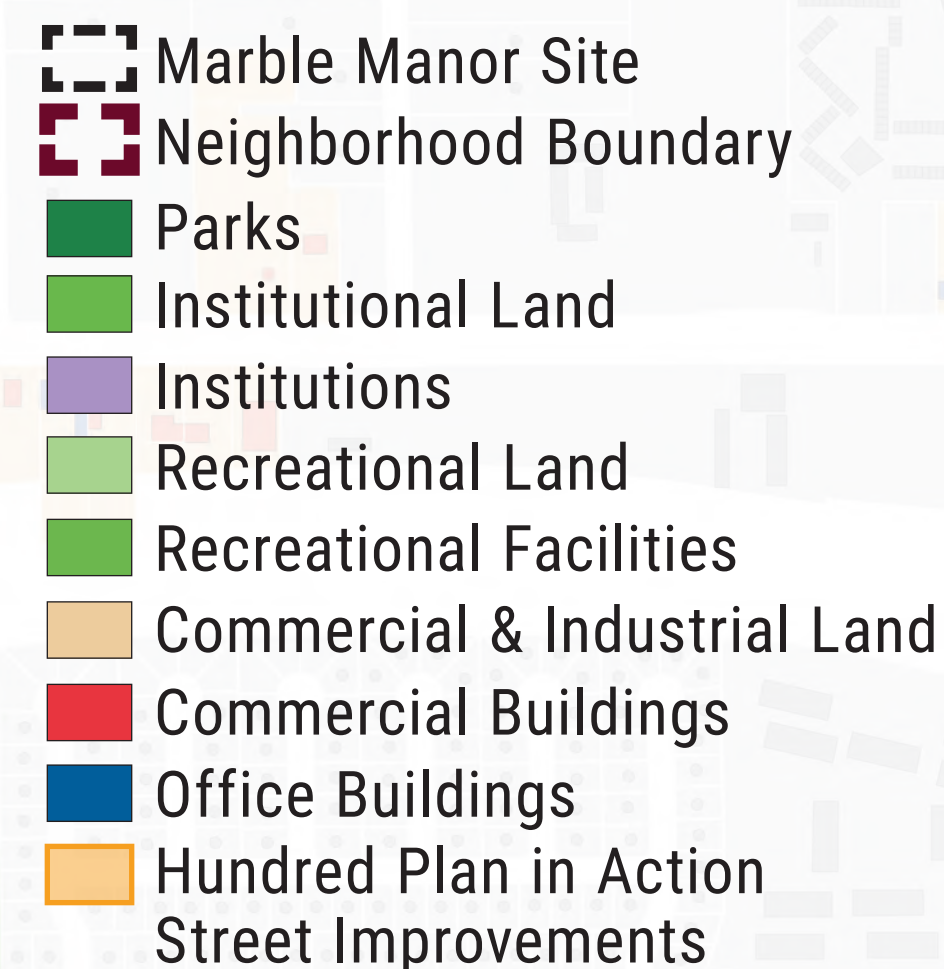
- 1 Former Moulin Rouge Site
- ### COMMUNITY INSTITUTIONS
- 1 Andre Agassi Boys & Girls Club
 - 2 Ruffin Family Clinic
 - 3 Acelero Learning Clark County
 - 4 Building Resilience Community Center
 - 5 Youth with a Mission
 - 6 Historic Westside School

COMMUNITY SCHOOLS

- 1 Wendell Williams Elementary

LOCAL GROCERY & RETAIL

- 1 Tenava Creek Brewery
- 2 Chevron Gas Station
- 3 Sinclair Gas Station
- 4 7-Eleven
- 5 Bank of America
- 6 MLK Plaza
- 7 Z Mart
- 8 Owens Avenue Strip Mall
- 9 Edmond Town Center
- 10 Nucleus Plaza
- 11 Bells Market & Gas

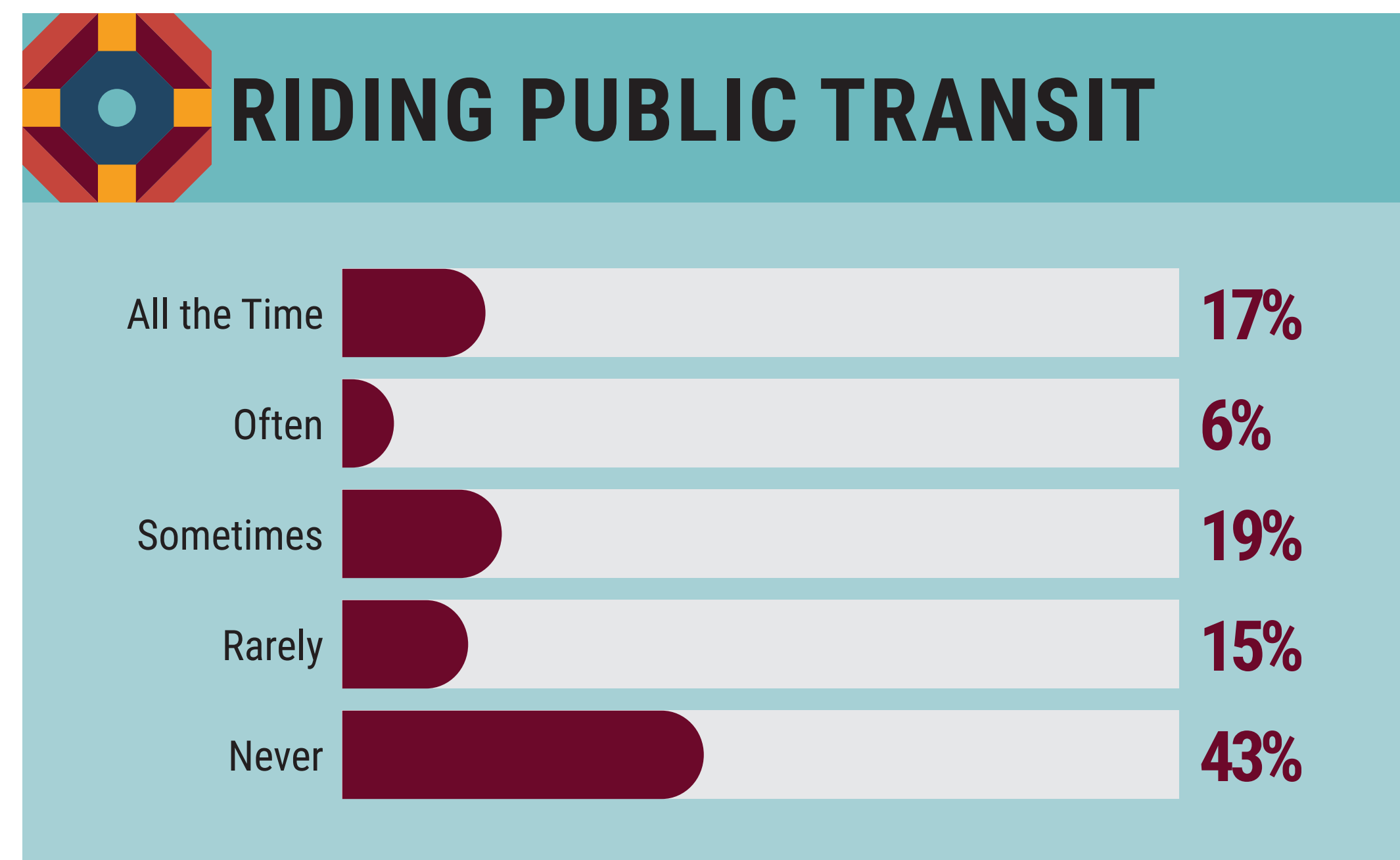
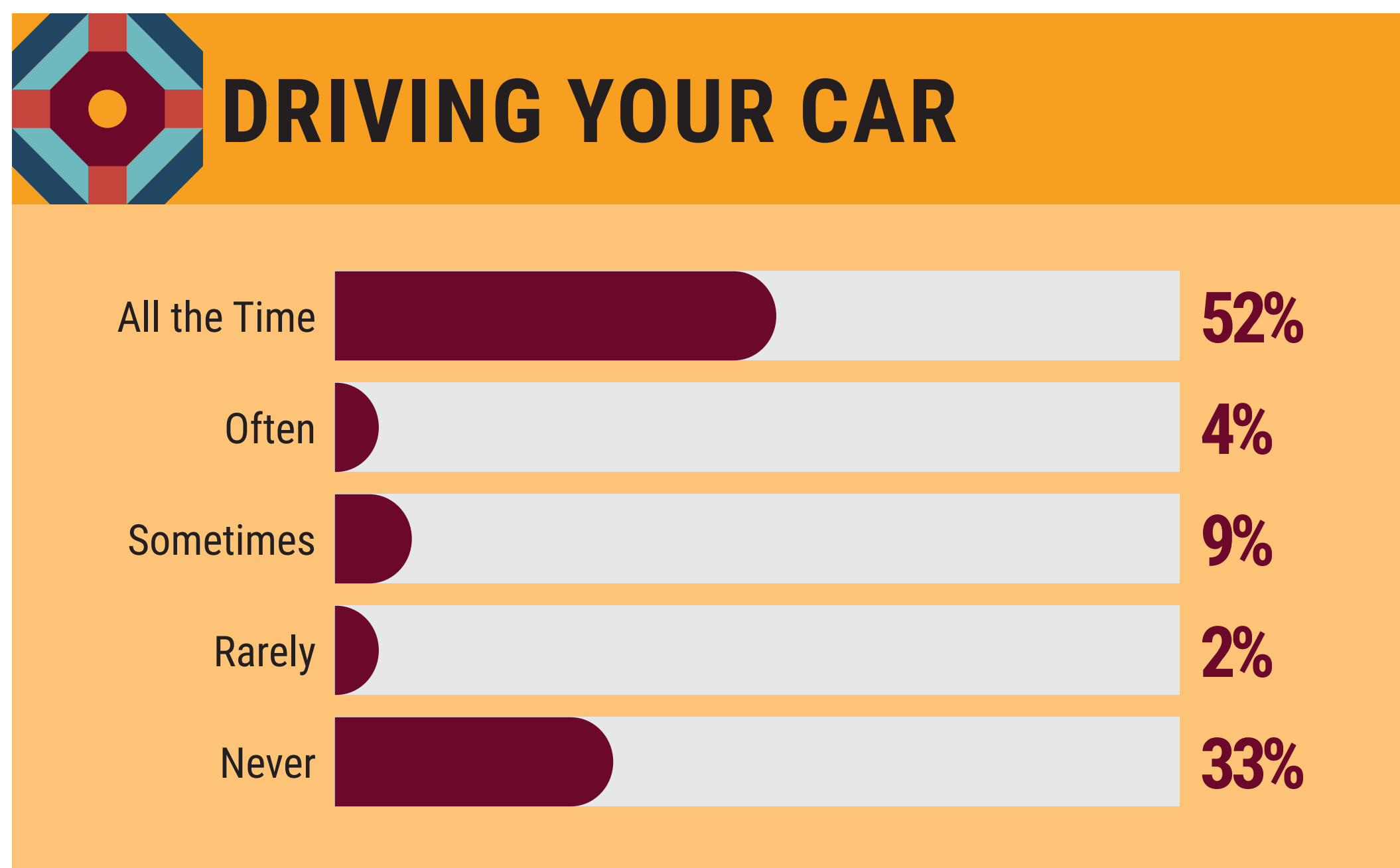
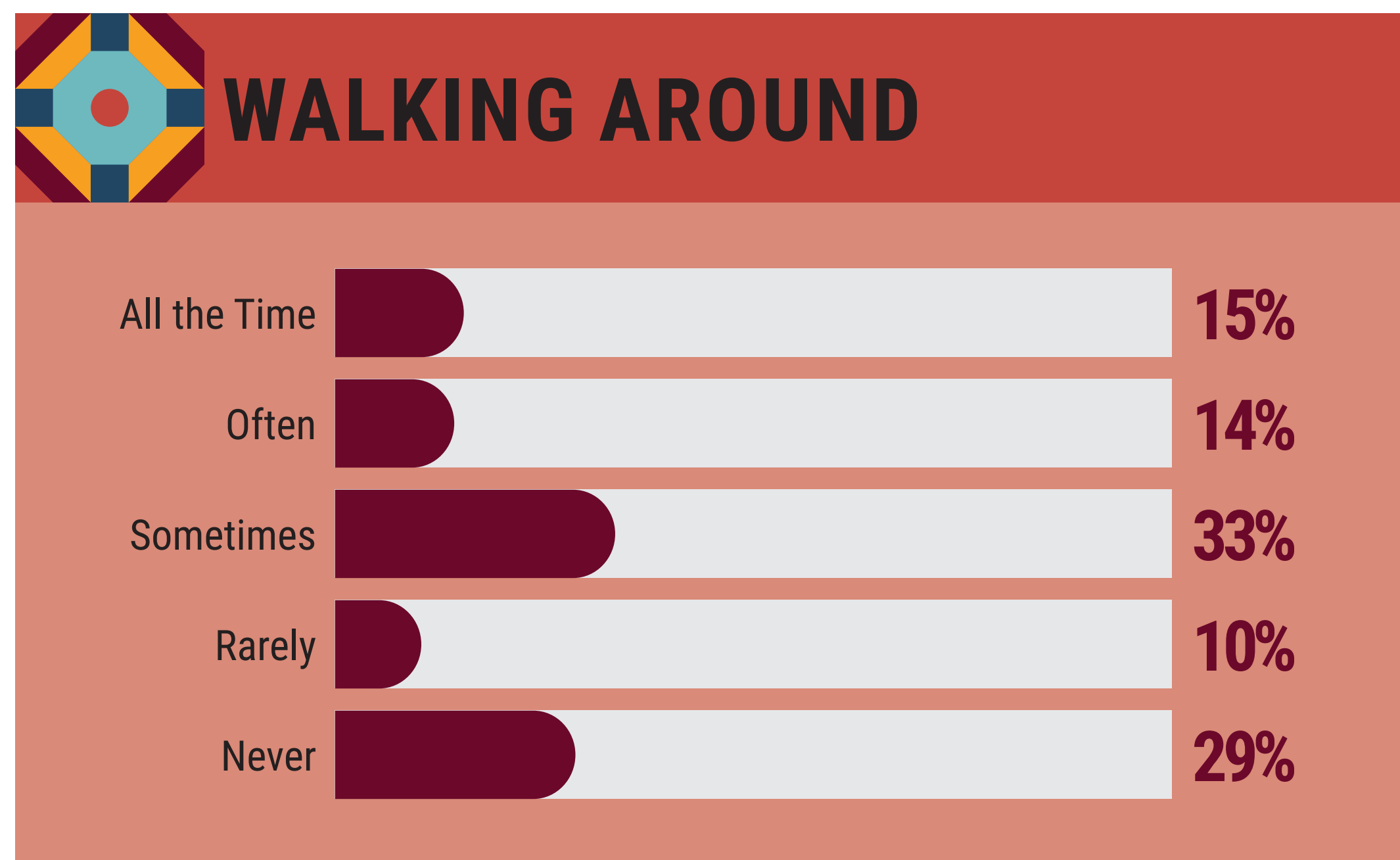
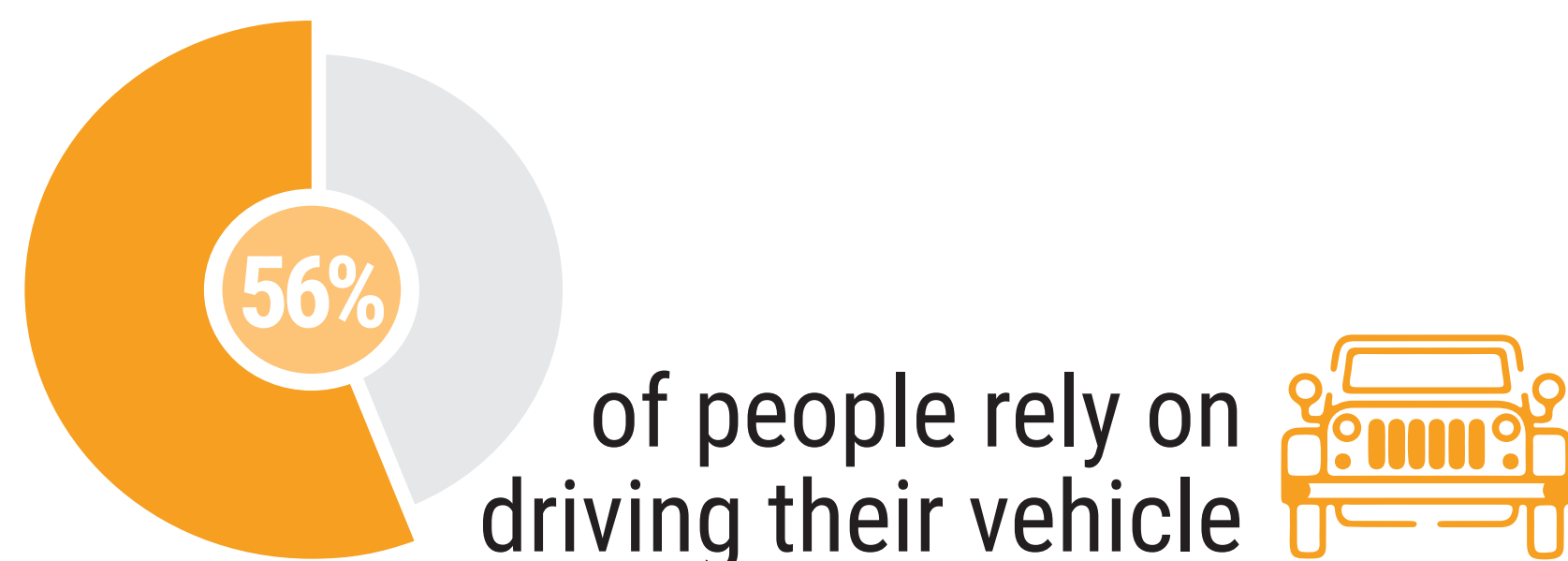


Reliability, Access, and Getting Around the Neighborhood

TRANSPORTATION

HOW OFTEN DO YOU AND YOUR HOUSEHOLD USE EACH MODE OF TRANSPORTATION?

14% of people would like more public transit and mobility options



18% of people say that transportation is a barrier to accessing services

23% of people say they need transportation assistance

MARBLE MANOR WALK SCORE
Marble Manor is considered **Somewhat Walkable** and **Bikeable**, with **Some Access to Transit**

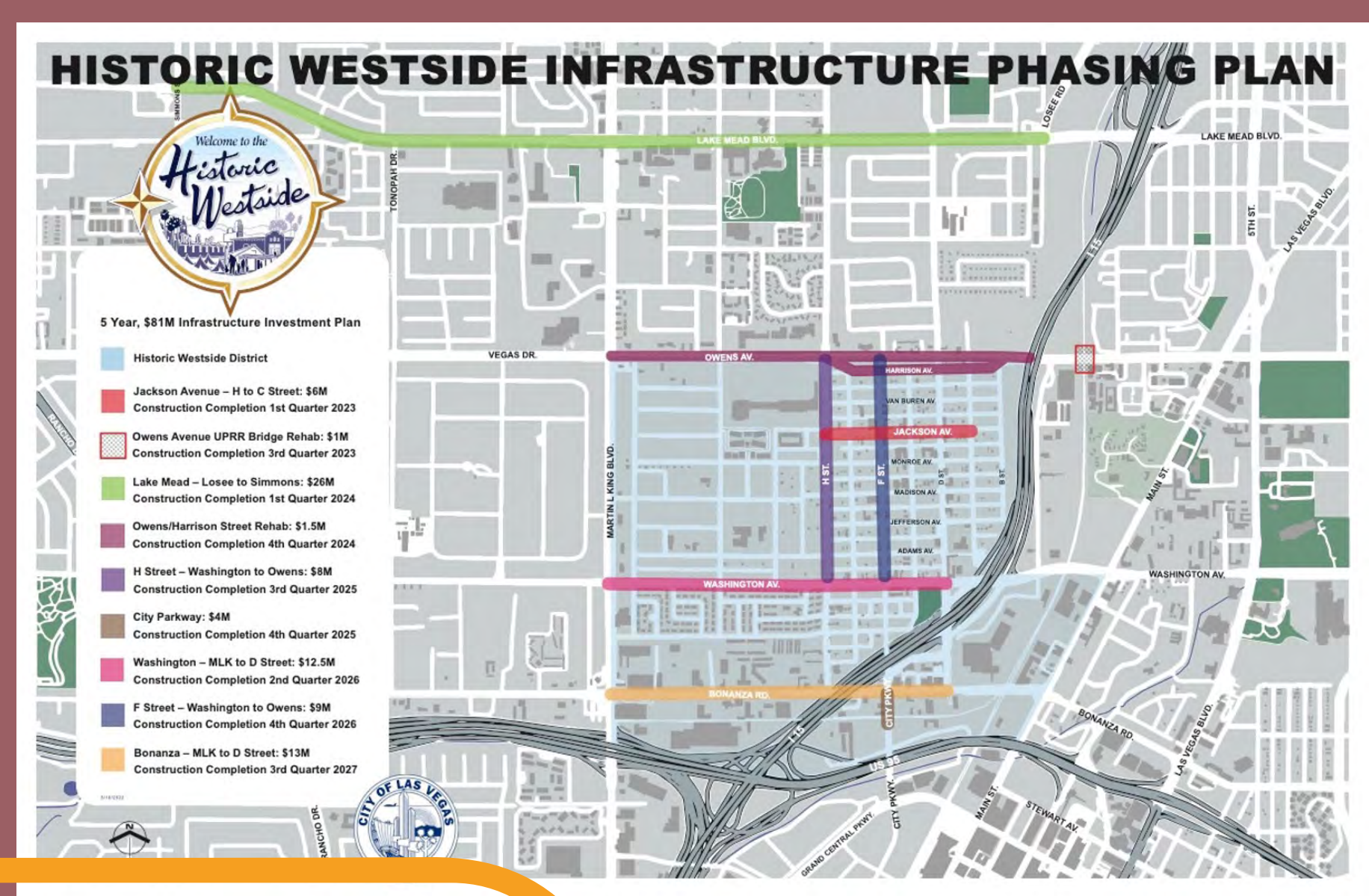
59 Walk Score
Some errands can be accomplished on foot

44 Transit Score
There are a few nearby public transit options

45 Bike Score
There is minimal bike infrastructure available

HUNDRED PLAN INFRASTRUCTURE PHASING

» The City of Las Vegas has a 5-year, \$81 million Infrastructure Investment Plan, including walkable street improvements to several streets in the Westside neighborhood



63% of people say they always have access to the transit they need

